



4

Bedrooms



2

Bathrooms

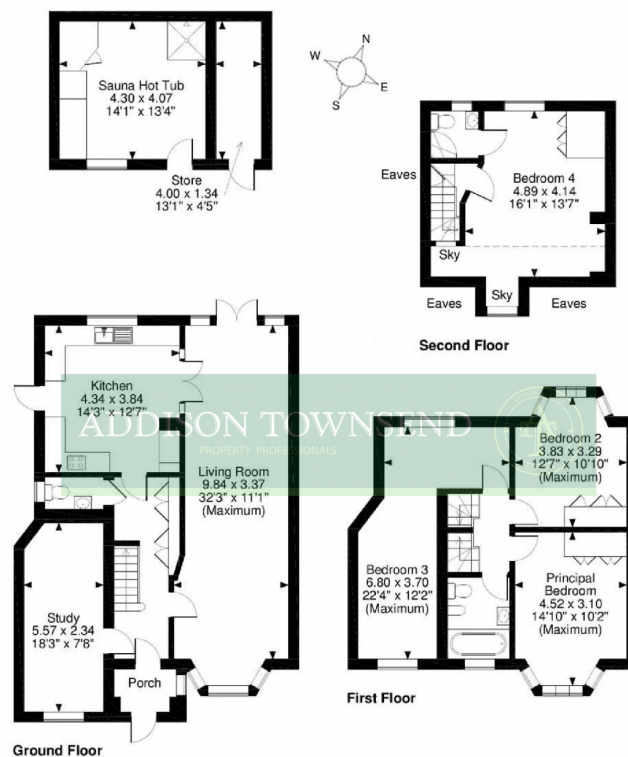


Addison Townsend are delighted present this stunning double-fronted, four bedroom semi-detached house in one of Southgate's premier roads. This house is conveniently situated on a wide, tree-lined street just 0.5 miles from the High Street and Southgate tube station.

Entering through the porch into the large bright reception/hallway, you're greeted with quality solid wooden flooring that flows throughout the property. To the left is a good sized office space, then on through the hallway is a large sunny kitchen/diner fitted with solid oak cabinets, granite worktops and under floor heating. Double doors in the kitchen open out into the bright and spacious living room.

The first floor has three double bedrooms, each with modern built-in wardrobes. The bedrooms share a large, newly-renovated family bathroom. The second floor (loft extension) offers a large double bedroom with en-suite, plenty of storage space and a skylight balcony looking out over the front of the property.

At the rear of the property, a landscaped private garden leads towards an outbuilding. Currently used as a home spa, and fitted with two saunas, a jacuzzi, WC and wet room, the building could easily be converted into an office space or granny annex.



The Vale, N14
Approximate Gross Internal Area
Main House = 1626 Sq Ft/151 Sq M
Sauna & Store = 260 Sq Ft/24 Sq M

FOR ILLUSTRATIVE PURPOSES ONLY - NOT TO SCALE

The position & size of doors, windows, appliances and other features are approximate only.

Denotes restricted head height

