



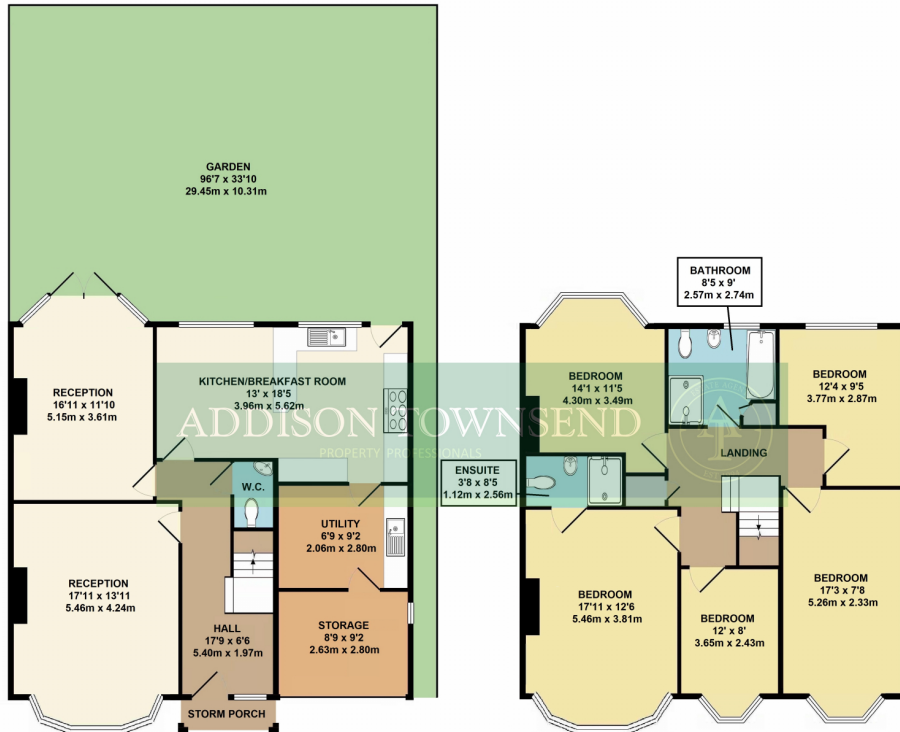
 5
Bedrooms

 2
Bathrooms



Addison Townsend are delighted to offer for sale this beautiful five bedroom semi detached house located in one of Southgate's most desirable tree lined residential roads. Situated within 0.5 miles of Southgate Underground and High Street and a short walk to Grovelands Park.

Double Fronted Semi Detached House | Five Bedrooms | 0.5 Mile Southgate Tube | Potential for extension (SSTP) | Two Reception rooms | Kitchen / Breakfast Room | Approx 100' Garden | Off Street Parking for 2/3 Cars | Chain Free |



GROSS INTERNAL FLOOR AREA 1848 sq ft 171.7 sq metres

Whilst every attempt has been made to ensure the accuracy of the floor plan contained here, measurements of doors, windows, rooms and any other items are approximate and no responsibility is taken for any error, omission, or mis-statement. This plan is for illustrative purposes only and should be used as such by any prospective purchaser. The services, systems and appliances shown have not been tested and no guarantee as to their operability or efficiency can be given.

	Current	Potential
Very energy efficient - lower running costs		
(92-100) A		
(81-91) B		81
(69-80) C		
(55-68) D	59	
(39-54) E		
(21-38) F		
(1-20) G		
Not energy efficient - higher running costs		

For more info

