



 2  
Bedrooms

 1  
Bathroom

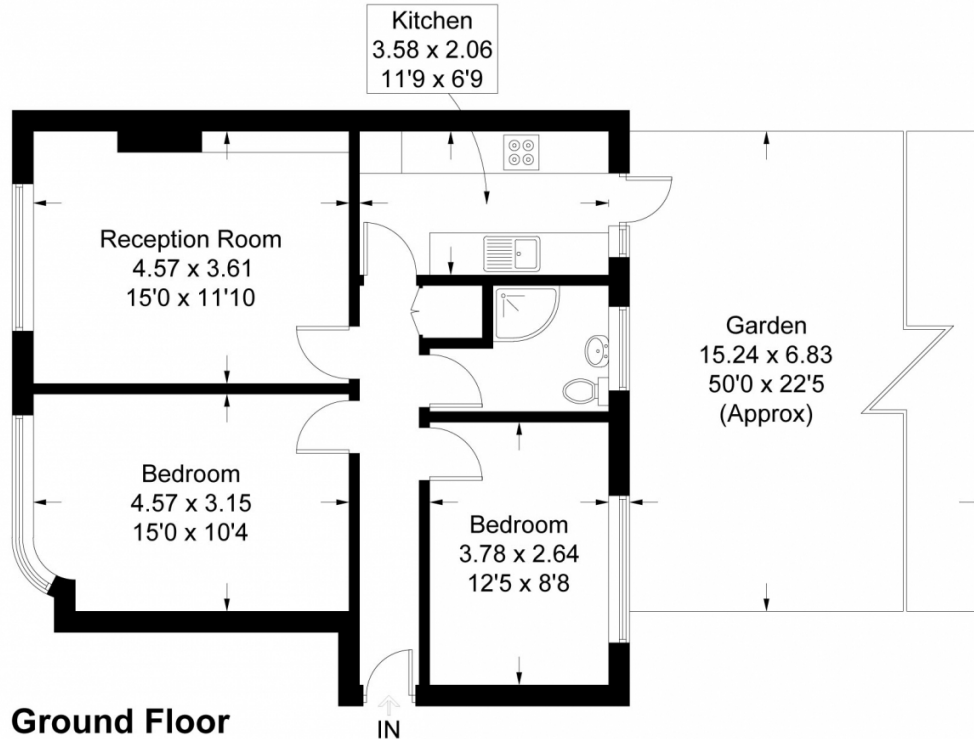




**Ideal for First Time Buyers or Investors. Viewings Recommended.  
Spacious Ground Floor Maisonette. Off-Street Parking. Large Garden.  
Modern Bathroom Suite.**

## Worthing Road, TW5

Approximate Gross Internal Area = 61.6 sq m / 664 sq ft



Measured in accordance with RICS Code of Measuring Practice. To be used for identification and guidance purposes only.  
Whilst every care is taken in the preparation of this plan, please check all dimensions, shapes and compass bearings before making any decisions reliant upon them.  
www.london58.com © 2021 hello@london58.com

