 **2**
Bedrooms

 **2**
Bathrooms



An impressive two bedroom apartment in this brand new development enjoying stunning views out to sea and is finished in a contemporary style throughout. Large windows flood the lounge with light and the triple aspect provides a fantastic outlook. Being situated in the heart of Bournemouth town centre just a stone's throw from the award-winning sandy beaches by Bournemouth pier, viewing is highly recommended. Holiday lettings permitted

Open Plan Living Area

The lounge diner is open plan to the kitchen and is incredibly bright having triple aspect windows and views out to sea just east of Bournemouth Pier. The kitchen area is fitted in a contemporary style and includes a range of both floor and wall mounted dark grey gloss cupboard and drawer units with adjoining work surface areas, an inset single bowl stainless steel sink unit, an inset electric oven with four ring hob and cooker hood above, a tall integrated fridge freezer and an integrated dishwasher. There is also an island with wood block worksurface and a range of cupboards and drawers beneath.

Entrance Hallway

The Compass point is accessed through a secure entrance hallway with telephone entry system.

Bedroom One

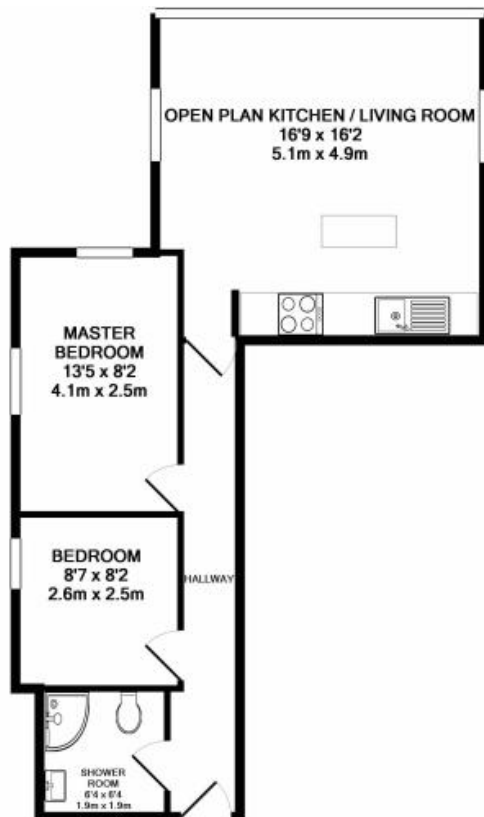
Bedroom One enjoying a double aspect with a pleasant outlook over the gardens of the prestigious Bath Hill Court. Smooth plastered ceilings and inset spotlights, television point.

Shower Room

The shower room has fully tiled walls with a contrasting tiled splashback behind the shower, a low level WC, an inset wash hand basin with vanity unit beneath and a corner shower cubicle with double opening sliding doors and a chrome heated ladder style towel rail.

Bedroom Two

Smooth plastered ceiling with inset spot lighting, and views across to the Bath Hill Court building, television point.



TOTAL APPROX. FLOOR AREA 543 SQ.FT. (50.5 SQ.M.)

Whilst every attempt has been made to ensure the accuracy of the floor plan contained here, measurements of doors, windows, rooms and any other items are approximate and no responsibility is taken for any error, omission, or mis-statement. This plan is for illustrative purposes only and should be used as such by any prospective purchaser. The services, systems and appliances shown have not been tested and no guarantee as to their operability or efficiency can be given.
Made with Metropix ©2019

