

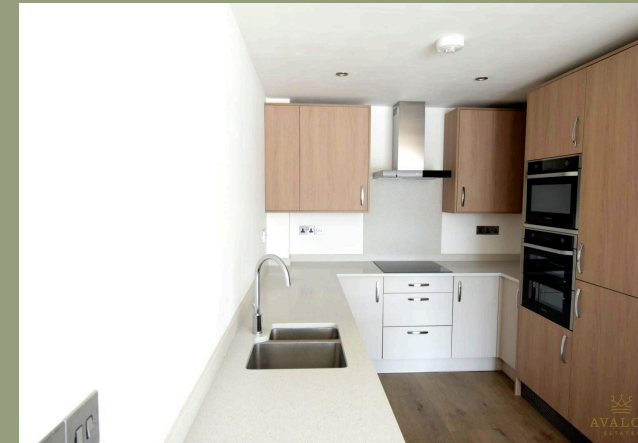


A Brand New 2 Bedroom Maisonette
New Road, BH10



£1,400 pcm

Avalon Estates - A Brand New 2 Bedroom contemporary styled maisonette which has been constructed to an exacting standard. The accommodation on offers comprises of 2 Bedrooms with a superb quality kitchen with integrated appliances and polished stonework surfaces, underfloor heating, modern bathrooms with sensor lighting and a spacious open plan living area. Additional benefits offered by this beautiful apartment include underfloor heating and allocated off road parking along with a secure bike storage. Located in the sought after Northbourne area which offers easy access to both Bournemouth and Ferndown and surrounding areas.



Entrance Hallway

Downstairs Cloakroom

Intergrated Kitchen

Open Plan Living Accomadation

Bedroom 1

Bedroom 2

Family Bathroom

Allocated Off Road Parking

