



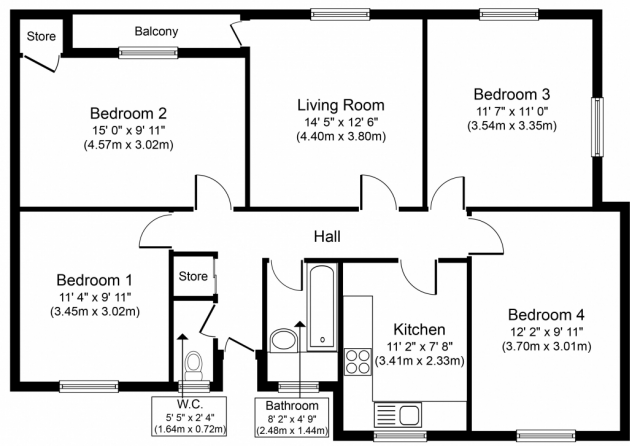
 4  
Bedrooms

 1  
Bathrooms



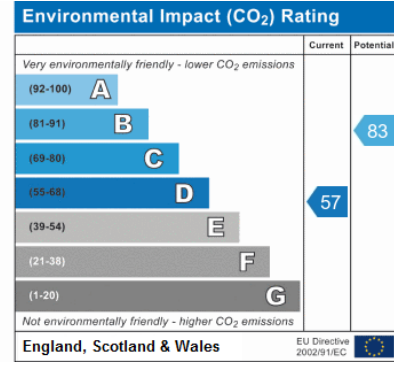
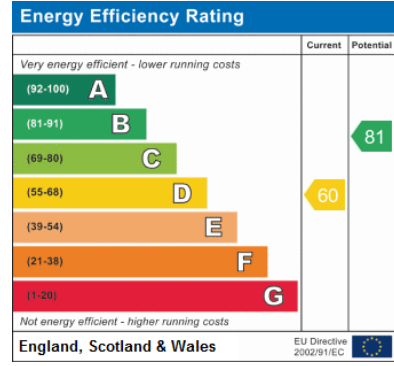
This very spacious and bright four double bedroom flat is set on the fourth floor of a purpose built block moments from multiple transport links including; Shadwell DLR & Overground, Aldgate and Wapping The property itself comprises of a light and spacious lounge which has doors leading out to the large balcony, a separate fully integrated modern kitchen, four large double bedrooms, a separate WC and a bathroom with bath and shower above. The property is perfectly decorated for the rental market and would need no work to update it.





Approximate Floor Area  
958 sq. ft.  
(89.0 sq. m.)

Whilst every attempt has been made to ensure the accuracy of the floor plan contained here, measurements of doors, windows, rooms and any other items are approximate and no responsibility is taken for any error, omission, or mis-statement. This plan is for illustrative purposes only and should be used as such by any prospective purchaser or tenant. The services, systems and appliances shown have not been tested and no guarantee as to their operability or efficiency can be given.  
Copyright V360 Ltd 2016 | www.houseviz.com



For more info

