



3

Bedrooms



1

Bathroom



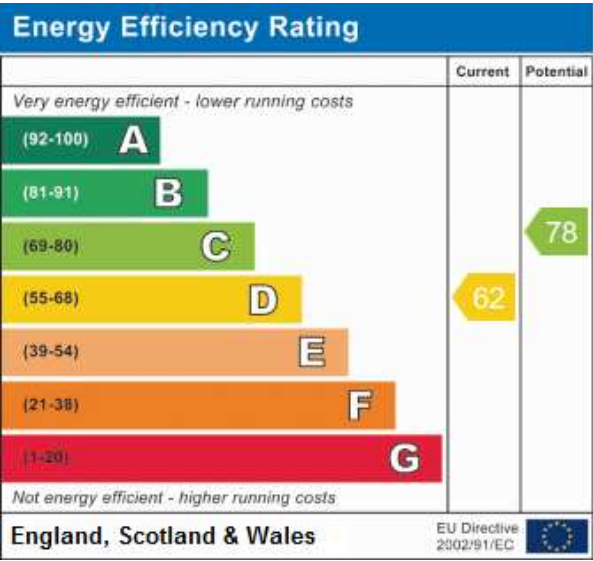
A chance to buy a well sized 3 bedroom family home with a utility room & potential to install a downstairs WC, within walking distance to the ever popular St James the Great Academy, train station & local shops, this could be the ideal location for many.

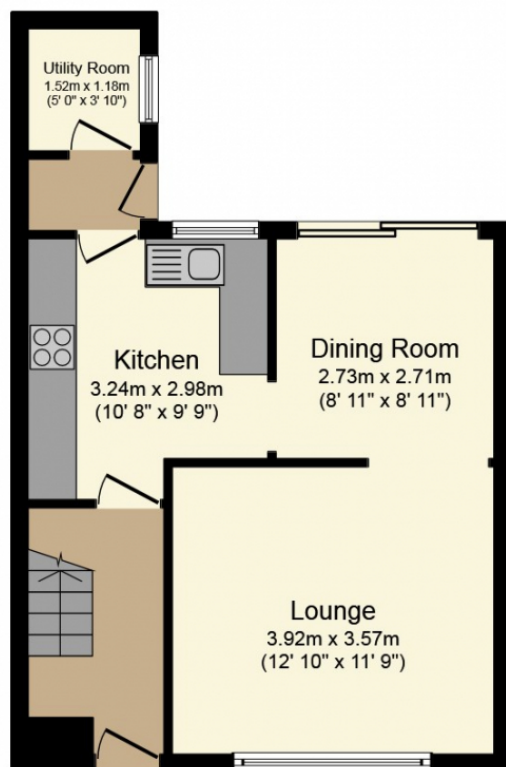
Park your car at ease on the road or in the car park to the rear of the property and come on in, of the hallway you will find a well proportioned kitchen and separate utility room. Opposite the kitchen you will find a dining area overlooking the low maintenance garden through to a large lounge with plenty of space for all your furniture.

On the first floor you will find bedroom 1 which in our opinion is a fantastic size with plenty of space for the usual bedroom furniture and a built in wardrobe, bedroom two is another great sized double, whilst the 3rd is larger than most 'box bedrooms'. The family bathroom has also been recently re fitted to a high standard with shower over the bath.

other benefits include: a very large garden shed with double glazing, high speed internet to the lounge and bedrooms, You will also have easy access to the M2 and the M20 motorways and a good bus service.

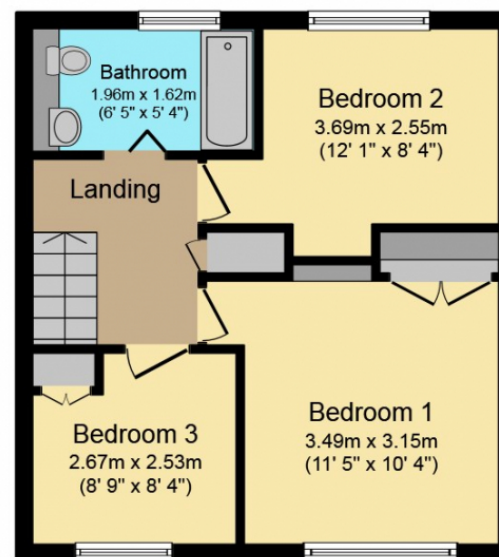
You are a short distance from the beautiful Leybourne Lake Country Park which boasts great outdoor activities and is perfect for peaceful countryside walks for all of the family. There are several picturesque villages within short journey times. Whilst Rochester is just across the river, with its host of pubs, bars and restaurants as well as the historic Castle and Cathedral.





Ground Floor

Floor area 41.0 sq. m. (441 sq. ft.) approx



First Floor

Floor area 37.0 sq. m. (398 sq. ft.) approx

Total floor area 78.0 sq. m. (840 sq. ft.) approx

This Floor Plan is for illustration purposes only and may not be representative of the property. The position and size of doors, windows and other features are approximate. Unauthorized reproduction prohibited. © PropertyBOX