



 4
Bedrooms

 3
Bathrooms



A chance to buy a beautiful 4 bedroom family home with 2 BATHROOMS & Downstairs WC, this could be your solution to queues and arguments in the morning! within walking distance to the ever popular Discovery School (Ofsted: Outstanding) & Kings Hill School, Liberty Square and public transport links on your doorstep this could be the ideal location for many.

The impressive and spacious accommodation offers flexible living across three floors

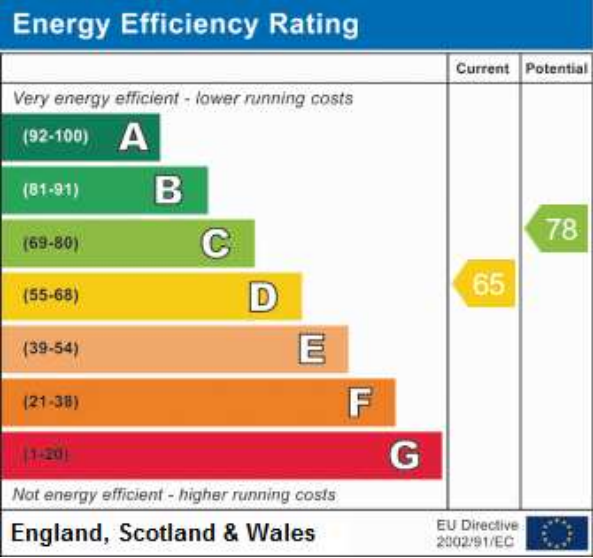
Park your car at ease on the driveway or in the garage, and come on in. Downstairs you will find a large Wc, lots of storage cupboards and for the entertainers out there a fantastic Kitchen/Diner which opens up onto a conservatory over looking the rear garden - this really is the perfect space to entertain friends and family (after lockdown of course!)

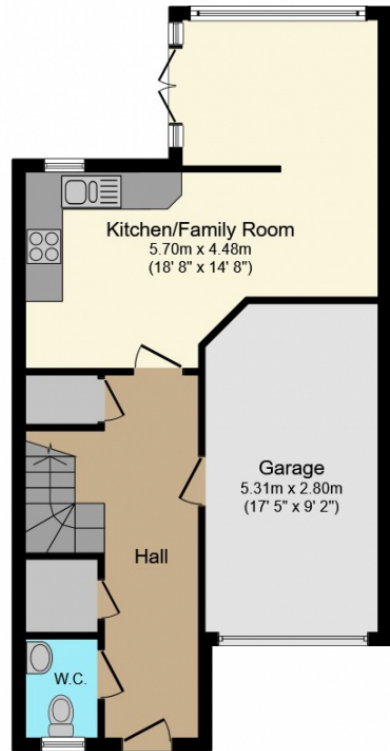
The first floor offers two flexible living areas, with a Juliet balcony and a gas fire in the large lounge area. The dining area has become the perfect home schooling/office for the current owner but is very versatile offering even more space for the eniter family to spread out! The double bedroom on the first floor has a peaceful view of the rear garden.

On the second floor you will find the Huge master bedroom complete with En-Suite & built in wardrobes, Bedroom Two which is another big double with fitted wardrobes and bedroom three which is again another fantastic sized room along with the family bathroom complete with shower over the bath.

This Family home must be viewed in person to appreciate what a hidden gem this is on Kings Hill.

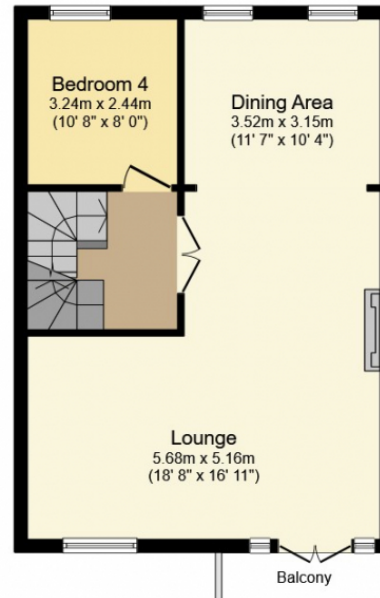
Kings Hill is Located just minutes from the historic town of West Malling with a broad high street and specialist shops, as well as doctor's surgery on the development, Waitrose and Asda stores. West Malling also has a main line station with a 50 minute journey time into Victoria and easy access to the M20/M26/25 motorways





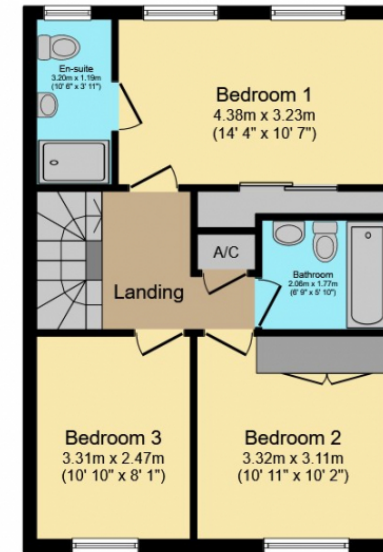
Ground Floor

Floor area 55.0 sq. m. (592 sq. ft.)
approx



First Floor

Floor area 48.0 sq. m. (517 sq. ft.)
approx



Second Floor

Floor area 48.0 sq. m. (517 sq. ft.)
approx

Total floor area 151.0 sq. m. (1,625 sq. ft.) approx

This Floor Plan is for illustration purposes only and may not be representative of the property. The position and size of doors, windows and other features are approximate. Unauthorized reproduction prohibited. © PropertyBOX