



 3  
Bedrooms

 1  
Bathroom







Benefiting a huge plot offering front rear and side gardens, fantastic sized rooms, Kitchen/Diner and a large lounge, not to mention the added benefit of garage en bloc - this property will make the perfect family home!

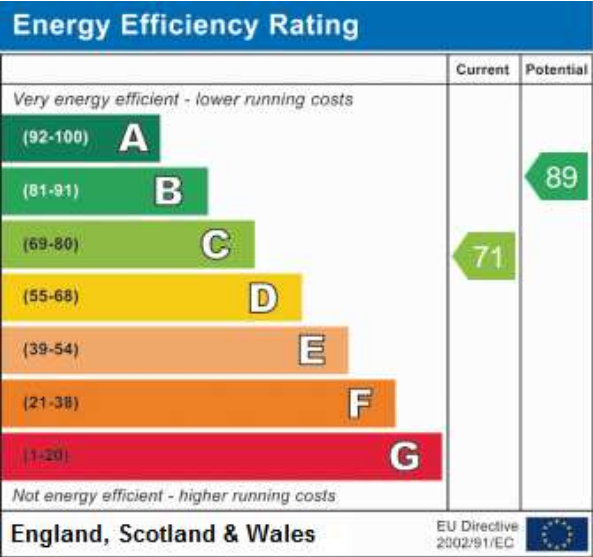
Leave your coat and shoes in the porch and come in, the large lounge offers plenty of space and has two windows making this a really bright room. To the rear you will find a large Kitchen/Diner a perfect space for entertaining friends & family, overlooking the garden which backs onto Berengrave Nature Reserve - which means you are not overlooked at all

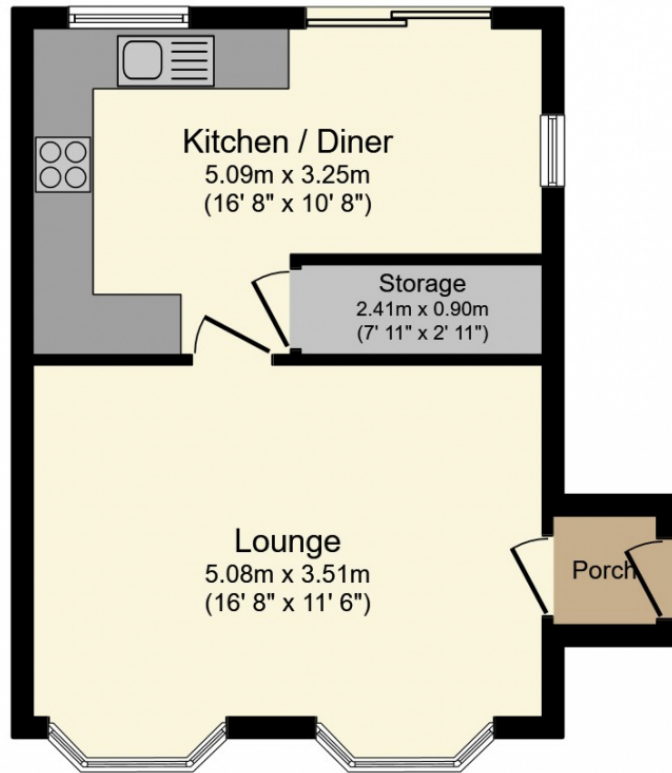
Upstairs you will find the master bedroom which offers plenty of space for all the usual bedroom furniture, as well as a great sized second bedroom overlooking the rear garden. The third bedroom currently used as a large single room offers space for wardrobes, chest of drawers and benefits built in storage.

Enjoy the garden in summer months and step out the kitchen onto a large decked area, this property sits on a corner plot so offers a wrap around garden - a perfect space for the kids to run riot.

With other benefits including: Lot's Of Storage, Garage En Bloc, Potential To Extend (Stpp) Walking distance to Rainham Train station, private rear garden and brand new windows throughout!

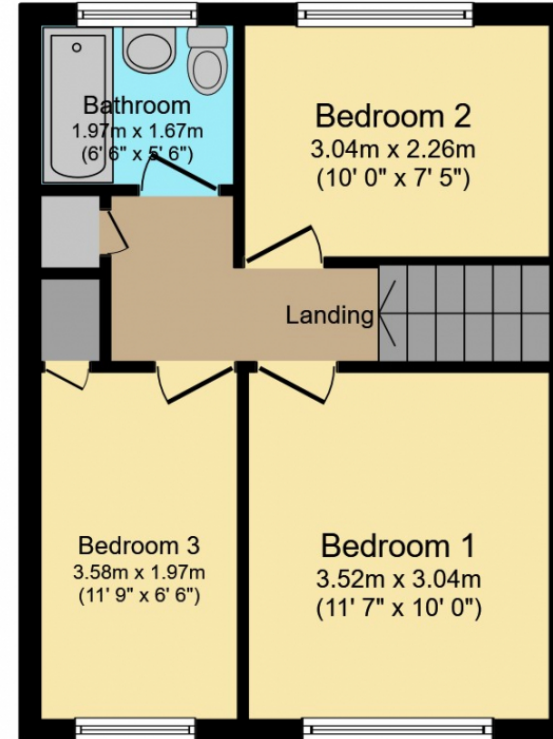
Macklands Way is well positioned for families with plenty of open walks and things to do. And for commuters this location offers good transport links and great access links to the A2/M2 motorway networks leading to Bluewater shopping centre, London and Dover. Nearby you will find schools for all ages, local amenities including a village hall, all major supermarkets as well as sports and leisure facilities.





### Ground Floor

Floor area 37.0 sq. m. (398 sq. ft.) approx



### First Floor

Floor area 35.0 sq. m. (377 sq. ft.) approx

Total floor area 72.0 sq. m. (775 sq. ft.) approx

This Floor Plan is for illustration purposes only and may not be representative of the property. The position and size of doors, windows and other features are approximate. Unauthorized reproduction prohibited. © PropertyBOX