



2

Bedrooms



1

Bathroom







Move straight in with no work to do! leave your coat and shoes in the large hallway and come straight in to your own private maisonette, with NO service CHARGE to pay!

Unlike most apartments this one offers heaps of storage - not to mention a bone dry Basement which could easily be converted into that mancave you've always been wanting, or even a home office! Or perhaps you just need the storage, if so this is a perfect room to create that extra space you have been looking for.

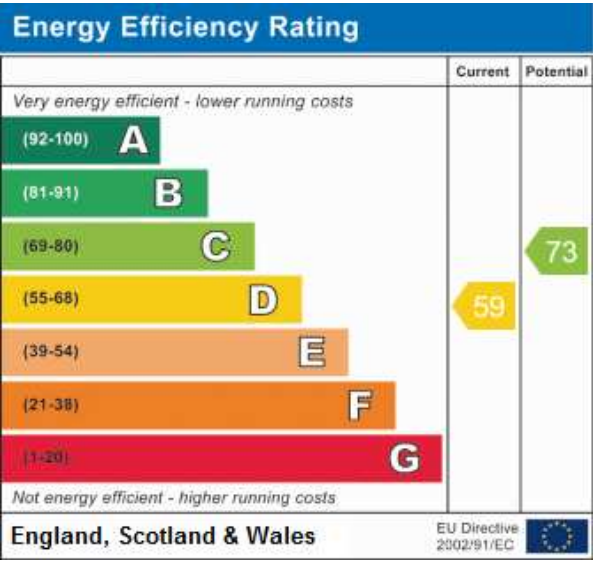
The lounge is a fantastic social space offering plenty of room for all the usual furniture and more, with an open kitchen and breakfast bar this makes the perfect space for entertaining friends and family (after lockdown of course)

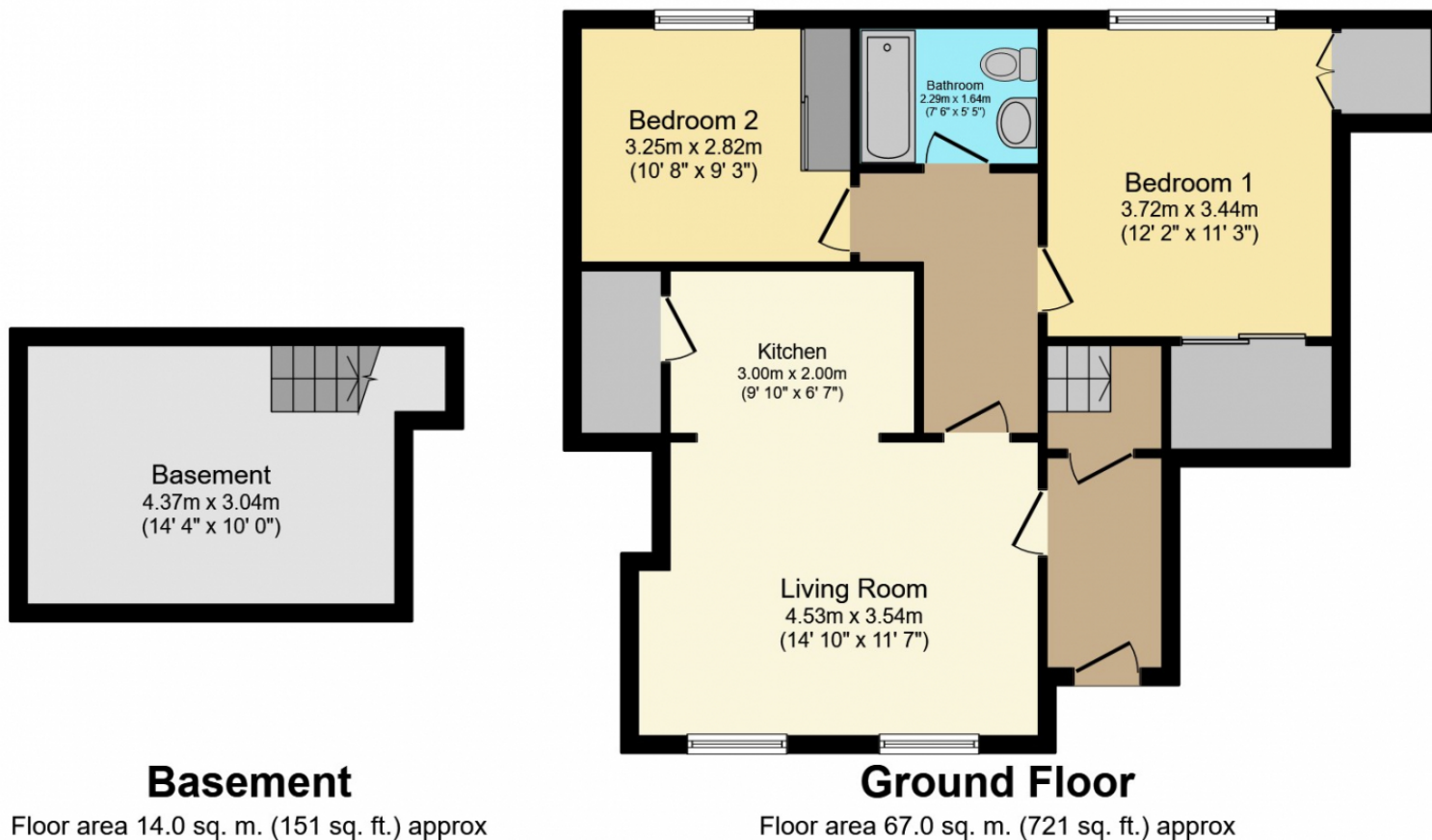
The Master bedroom is a great size benefiting built in wardrobes & a huge storage cupboard, whilst the second bedroom is another good size double, currently used as a home office/ guest room.

The current owner has recently re fitted the bathroom to a superb standard complete with large tub & shower over the bath & a brand new boiler, Meaning you can litterly move straight in & have no work to do!

With the countryside on your doorstep Eccles could be an ideal village for you. Enjoy the countryside as you walk past Neolithic stones at Kits Coty or past the recently planted Chapel Down vineyards. At the end of your walk stop in on the dog friendly village pub; The Red Bull! Just outside the village is The Friars; an ancient religious house open to the public with a cafe, farmers market and peaceful gardens. If you have little ones and like the idea of a small village school then St Marks primary school is ideally situated. Local conveniences also include a village shop with postal facilities at the end of the road and doctors surgery with dispensing chemist.

For those who need to commute, you have access to the M2 at the top of nearby Blue Bell Hill or the M20 at the bottom. There are also buses to Rochester, Chatham and Maidstone.





Total floor area 81.0 sq. m. (872 sq. ft.) approx

This Floor Plan is for illustration purposes only and may not be representative of the property. The position and size of doors, windows and other features are approximate. Unauthorized reproduction prohibited. © PropertyBOX