



 4
Bedrooms

 2
Bathrooms



Cat not included! A chance to buy a beautiful 4 DOUBLE bedroom family home with a very impressive Kitchen/Family Room, & TWO bathrooms, this could be your solution to bathroom queues in the mornings! The property is within walking distance to a selection of locals Schools, High speed train station & local shops, as well as Leybourne lakes nature reserve on your doorstep this could be the ideal location for many.

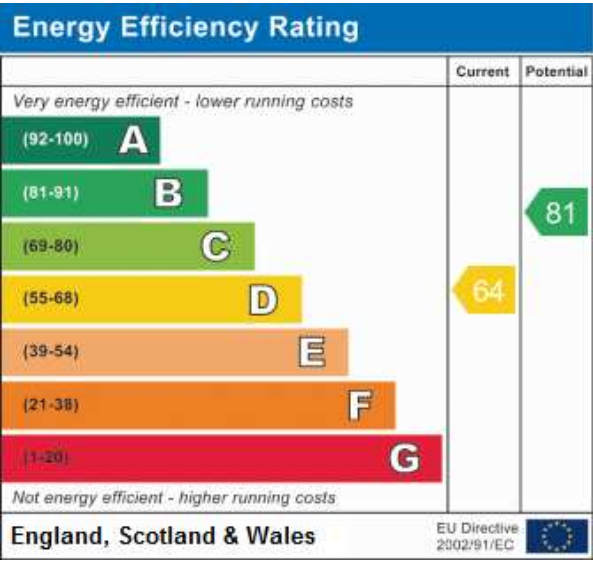
Park your car at ease on the driveway and come on in. The sellers have refurbished the entire property to a great standard. The heart of this home is the stunning kitchen / diner making for a perfect space for entertaining family and friends (after lockdown of course), the large french doors open up onto a beautiful patio area giving you even more space for the family to spread out.!

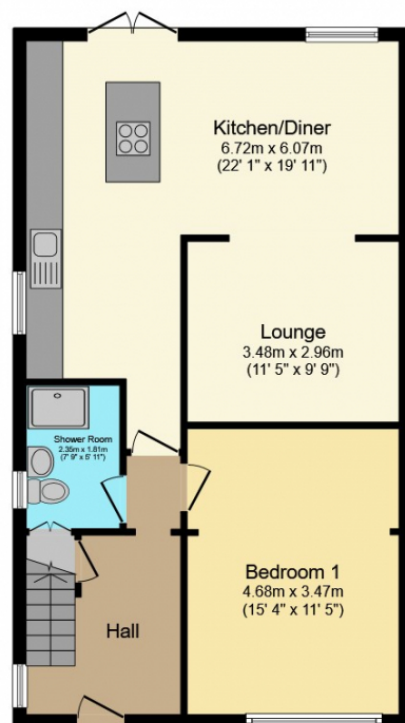
You will also find a large separate lounge with plenty of space for all your furniture, a huge downstairs double bedroom along with a utility and shower room.

On the first floor you will find bedroom 2 which is a fantastic size offering plenty of space for all your bedroom furniture overlooking the rear garden. Bedrooms 3 & 4 is another large double bedroom. The family bathroom will be sure to impress with a separate bath and shower as well as his and hers sinks.

The garden is a fantastic size with it's large patio area as well as a workshop to the rear which could easily be converted to create a home office!

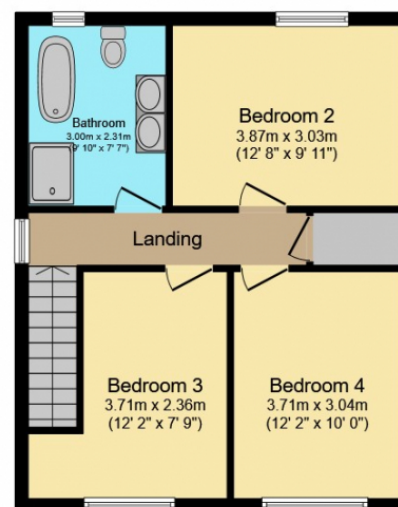
This is a property you will not want to miss!





Ground Floor

Floor area 67.2 sq.m. (724 sq.ft.)
approx



First Floor

Floor area 47.2 sq.m. (508 sq.ft.)
approx

Total floor area 114.5 sq.m. (1,232 sq.ft.) approx

This Floor Plan is for illustration purposes only and may not be representative of the property. The position and size of doors, windows and other features are approximate. Unauthorized reproduction prohibited. © PropertyBOX