



2

Bedrooms

2

Bathrooms



Located on the hugely sought after Holborough Lakes this luxury two bedroom top floor apartment of approximately 1009 sqft is set in the iconic Providence House, the New England style building that acts as the main focal point of the whole development. As you enter the development and continue along the tree lined boulevard you will immediately be impressed by this gleaming white building facing you. The development benefits from vast landscaped areas including waterside paths, mature trees and lakes all with the backdrop of the North Downs. For the active out there is an on site gym and activity trail on the development.

The master bedroom will be sure to impress benefitting, an en-suite and walk in wardrobe, the second double bedroom also benefits built in wardrobes. The family bathroom in the hallway is finished to a great standard complete with shower over the bath, off the hallway you will also find a large Laundry cupboard.

The open plan living area is a fantastic size offering plenty of space for all your furniture as well as beautiful views across to the North downs, you will also find a great dining space opening up onto the Kitchen which has a nice separate feel to it complete with integrated appliances.

This property benefits double glazing and allocated parking ideal for many buyers and investors alike.

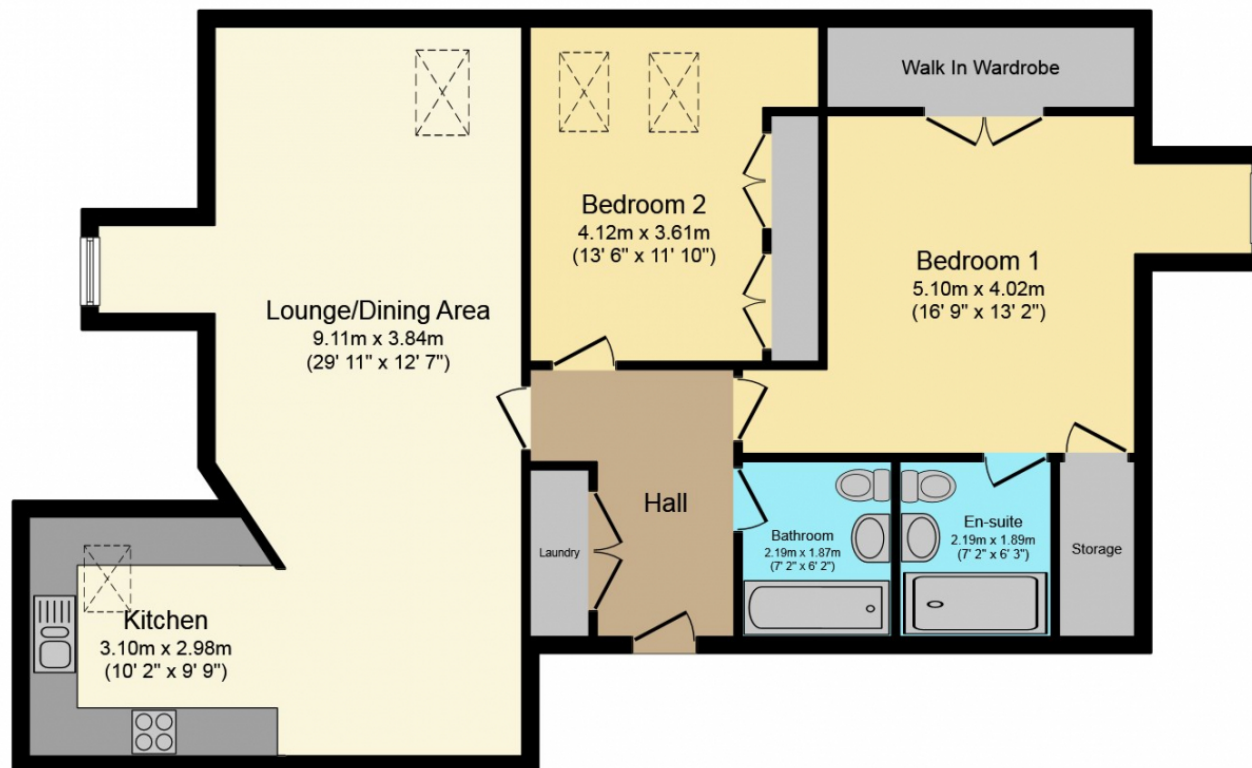
Lease - 104 Years Remaining / Service Charge Approx £2,200 pa / Ground Rent £250 pa

The Holborough Lakes development houses a village hall and crèche as well as a new primary school managed by the Valley Invicta Academies Trust (who are rated outstanding by Ofsted). The development is well located for both the M2 and M20 for easy access to the M25. Snodland train station now also benefits from High Speed Commuter trains to St Pancreas inside 45 minutes (via Ebbsfleet and Stratford International).



EPC
Coming soon

The image shows the Energy Performance Certificate (EPC) logo, which consists of a house icon with a color-coded scale from A (green) to G (red). Below the logo, the text "EPC" is written in large red letters, and "Coming soon" is written in large black letters. A red horizontal line is positioned below the text.



Floor Plan

Floor area 103.0 sq. m. (1,109 sq. ft.) approx

Total floor area 103.0 sq. m. (1,109 sq. ft.) approx

This Floor Plan is for illustration purposes only and may not be representative of the property. The position and size of doors, windows and other features are approximate. Unauthorized reproduction prohibited. © PropertyBOX