



2

Bedrooms



2

Bathrooms



Be the First to live in this Stylish property with uninterrupted views of the lake this Penthouse Apartment boasts Two Double Bedrooms, with the master benefitting built in Wardrobes & Shower En-Suite, in addition to this there is a family bathroom in the hallway which faces the built in storage cupboard. Externally there is a gorgeous wrap around private balcony with lake views

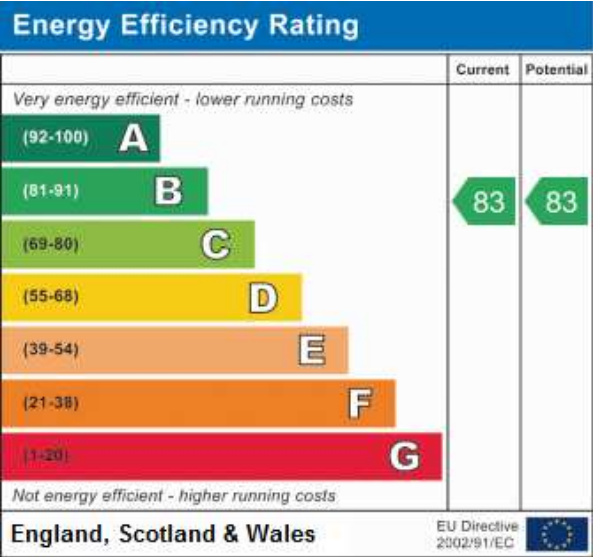
The main living space is Perfect for Entertaining Friends and Family as there is an Open Plan Kitchen/Diner area, which Flows Through into the Living Area and then out onto the wrap around Balcony with a full view of the lake.

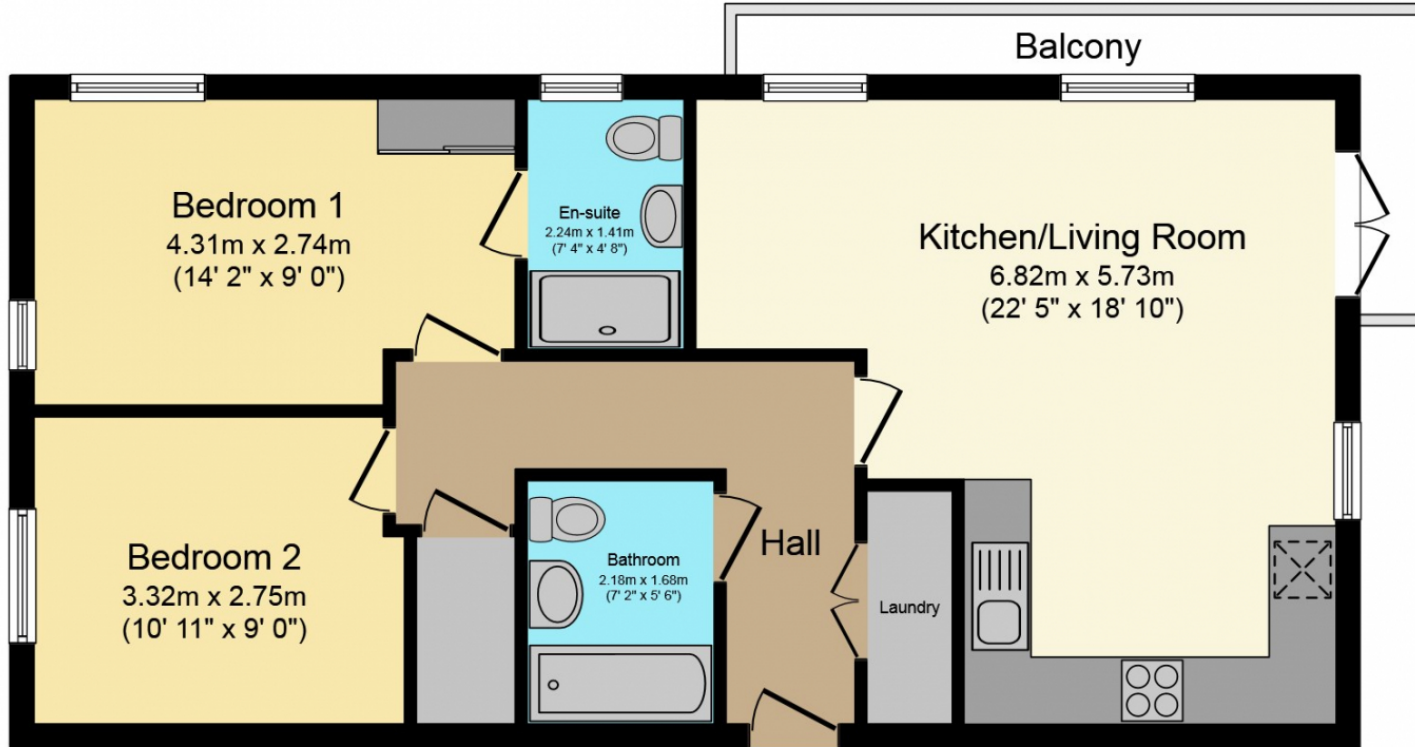
Other benefits include; Two allocated parking spaces, Fully Integrated Kitchen with Designer Appliances.

The Holborough Lakes development benefits from vast landscaped areas including waterside pathways, mature trees and lakes all with the backdrop of the North Downs. For the active out there, there is an on-site gym, activity trail and swimming club on site.

The development is well located for both the M20 and M2 for easy access to the M25. Rail connections are provided at the nearby Snodland railway station with its fast service into London. For those who like shopping, Bluewater is just over 20 minutes via car, whilst the historic towns of Rochester and Maidstone can be reached in around 15 minutes by car, both providing the services you would expect from significant towns.

Call today to arrange your appointment to view





Floor Plan

Floor area 65.0 sq. m. (700 sq. ft.) approx

Total floor area 65.0 sq. m. (700 sq. ft.) approx

This Floor Plan is for illustration purposes only and may not be representative of the property. The position and size of doors, windows and other features are approximate. Unauthorized reproduction prohibited. © PropertyBOX