



1  
Bedroom



1  
Bathroom







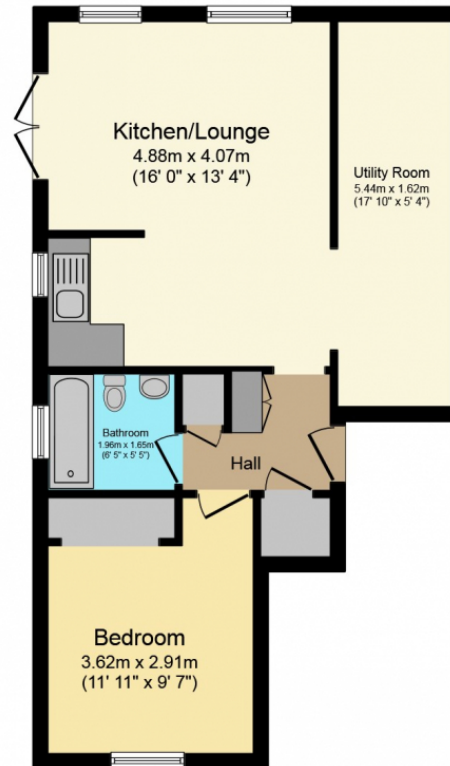
A Beautiful 1 Bedroom Ground Floor Apartment that benefits: an open plan living room with french doors opening up onto a cummul garden & TUCKED away around the corner you will find your very own Private garden area.

Bedroom 1 is a great sized double room benefitting built in wardrobes and located next to the bathroom complete with shower over the bath.

The property boasts lot's of storage and comes with it's own parking space.

Located in the ever popular Walderslade Village, close to all amenities including supermarkets and a variety of local business's.





## Floor Plan

Floor area 48.0 sq. m. (517 sq. ft.) approx

Total floor area 48.0 sq. m. (517 sq. ft.) approx

This Floor Plan is for illustration purposes only and may not be representative of the property. The position and size of doors, windows and other features are approximate. Unauthorized reproduction prohibited. © PropertyBOX