



 2
Bedrooms

 1
Bathroom

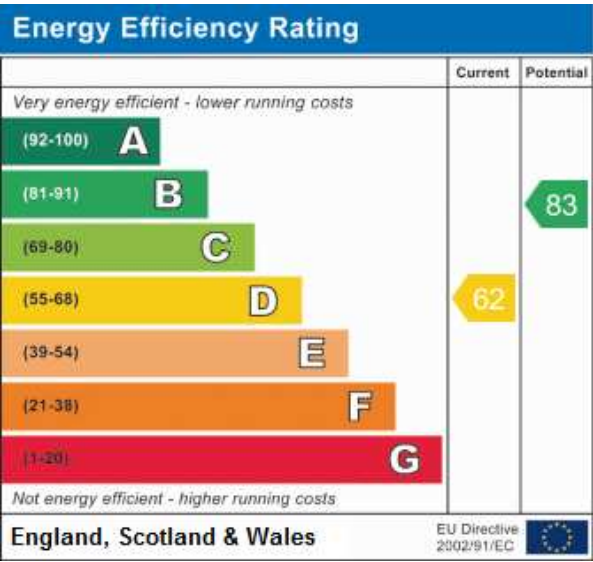


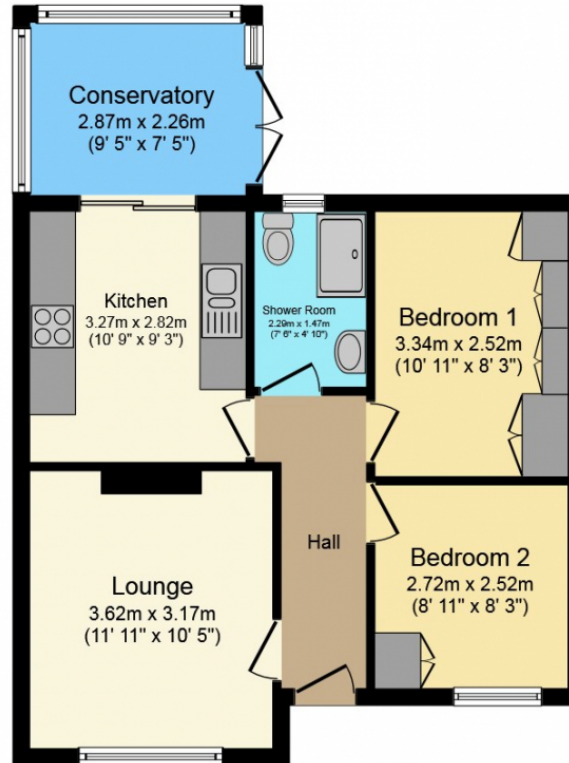
A beautiful 2 Bedroom Bungalow With A Garage & Parking In a Superb Location - Don't Miss Out!

The generous plot includes a large front driveway, a flat rear garden and a separate larger than average garage.

Recently refurbished throughout! The property benefits a separate lounge with log burner, a large kitchen area opening up onto the conservatory overlooking the rear garden, the master bedroom is fitted with wardrobes as well as a further second bedroom and the family bathroom which benefits a walk in shower. The property is in great condition throughout, and best of all there is no chain!

Annie Road is located well for both the M20 and M2 for easy access to the M25. Rail connections are provided at the nearby Snodland railway station with its fast services into London. For those who like shopping Bluewater is just over 20 minutes via car, whilst both the historic towns of West Malling and Rochester can be reached within 15 minutes by car, providing the services you would expect from significant towns as well as offering several restaurants, pubs and places of visit. Call today to arrange your appointment to view





Floor Plan

Floor area 53.0 sq. m. (570 sq. ft.) approx

Total floor area 53.0 sq. m. (570 sq. ft.) approx

This Floor Plan is for illustration purposes only and may not be representative of the property. The position and size of doors, windows and other features are approximate. Unauthorized reproduction prohibited. © PropertyBOX