



4

Bedrooms



1

Bathroom







A chance to buy a beautiful 4 bedroom family home with the benefit of a study! this could be your solution to the new normal and working from home! within walking distance to the ever popular New Ash Green Primary School, local shops, as well as being less than a 2 minute walk into beautiful woodlands, with this all on your doorstep this could be the ideal location for many.

Park your car at ease to the rear of the property or in the double garage and come on in. The large kitchen/diner makes a perfect space for entertaining family and friends, complete with island & hob as well as integrated appliances!

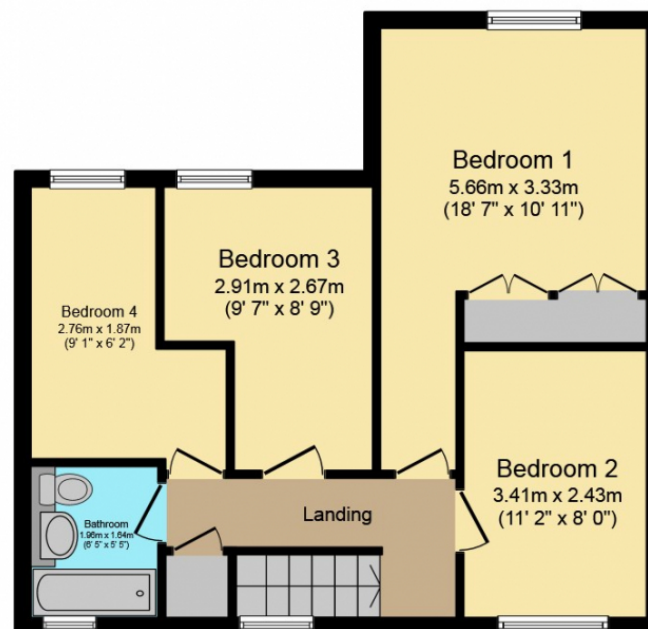
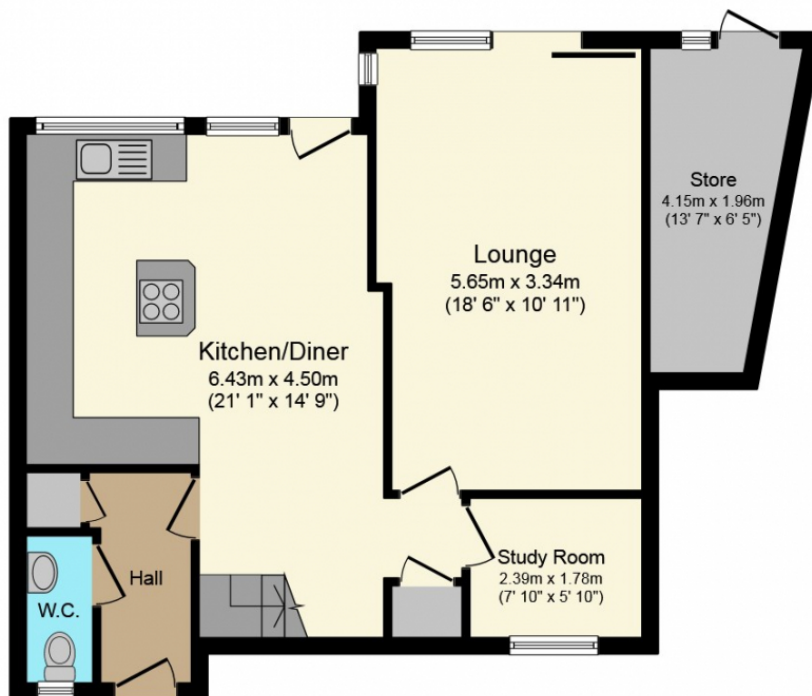
Downstairs you will also find a Wc, a separate study and a huge extended lounge overlooking the beautiful rear garden giving you even more space for the family to spread out in summer months. The garden benefits from all day sun and is not overlooked at all, a beautiful fish pond, bbq area and store room.

On the first floor you will find bedroom 1 which benefits built in double wardrobes over looking the pretty rear garden, bedroom two is another great sized double with plenty of room for all the usual bedroom furniture, as well as bedrooms three and four which are again great sized bedrooms. The family bathroom has been re fitted to a great standard with shower over the bath. With the added benefit of a double garage en bloc & a store to the side of the property, storage wont be a problem - this is a property you will not want to miss!

**Capelands Residents Society £54.50 pcm / Village Association £39.96 pcm.**

New Ash Green benefits from local shops, bakery, takeaways, doctor and dental surgeries, primary school and nurseries, access to bus services and close distance to Longfield railway station offering services to London, as well as a commuter coach service. If this isn't enough, you are in close proximity to Bluewater Shopping Centre and Ebsfleet International Station.





Total floor area 113.0 sq. m. (1,216 sq. ft.) approx

This Floor Plan is for illustration purposes only and may not be representative of the property. The position and size of doors, windows and other features are approximate. Unauthorized reproduction prohibited. © PropertyBOX