



2

Bedrooms



2

Bathrooms



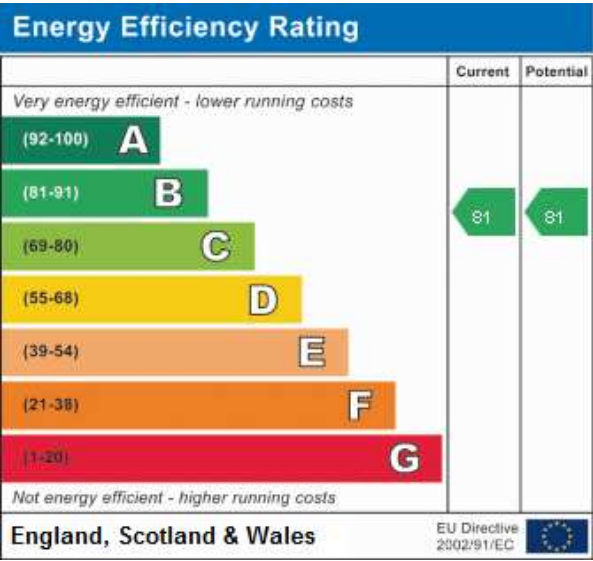
Situated in the Heart of Peters Village this Wonderful Detached Coach House will make the Perfect First Home or Investment Property. And with the added benefit of two allocated spaces & plenty of visitor bays, parking will not be a problem!

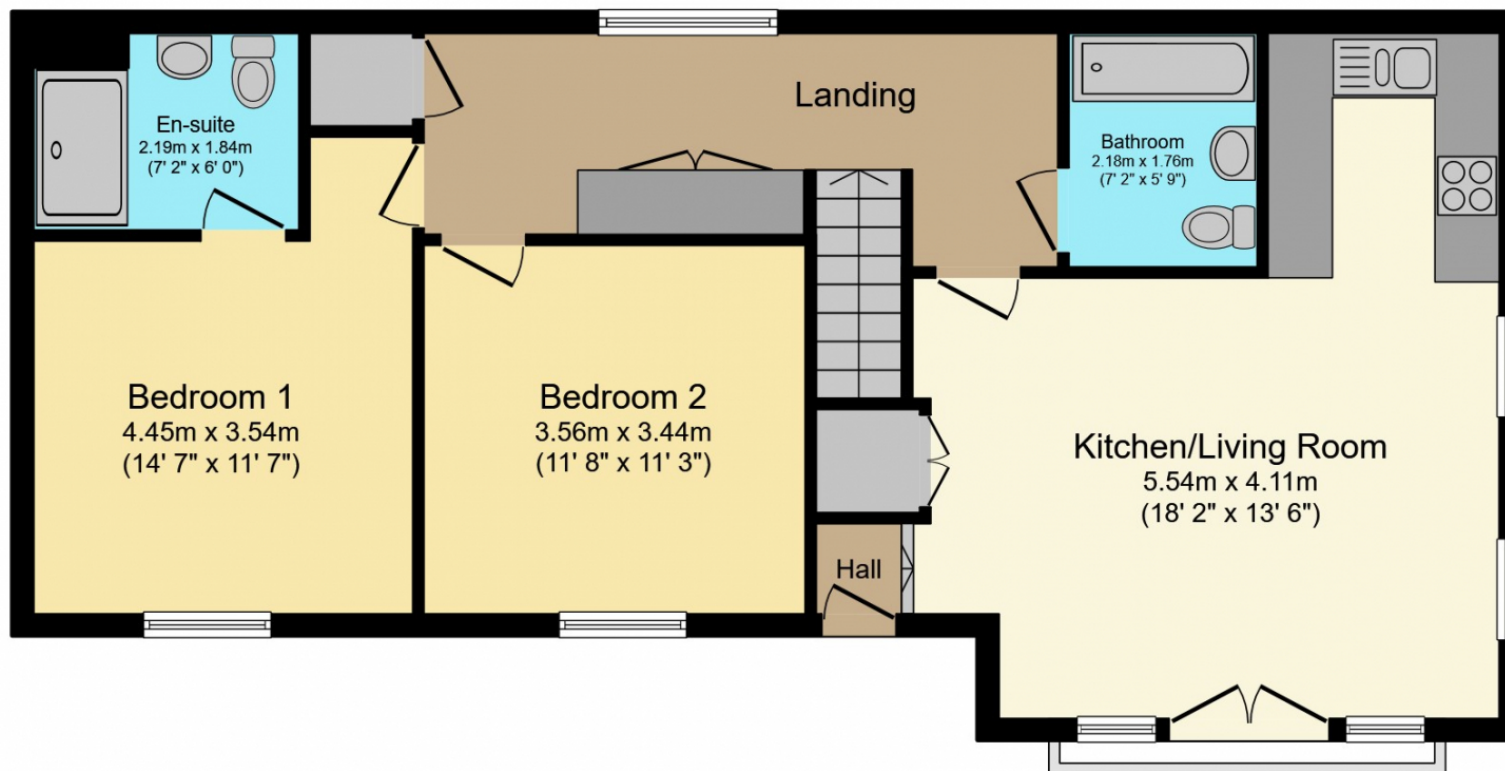
Boasting an open plan lounge and dining area which makes for a perfect place to entertain friends and family opening onto a fully fitted kitchen with integrated appliances, The property also benefits a Juliet balcony.

The master bedroom features a large en-suite shower room. There is a second double bedroom and the main family bathroom, as well as plenty of large storage cupboards.

You will also find a communal garden & communal bike store to the rear of the property as well as an external storage cupboard for the Coach House.

Peters Village is a very sought after development set beside Peter's Bridge for direct routes over the Medway. Wouldham village lies just a mile away for local services. The M2 junction is less than 5 miles away and Snodland Station with fast routes into London is just 2.4 miles away.





Floor Plan

Floor area 78.6 sq.m. (846 sq.ft.) approx

Total floor area 78.6 sq.m. (846 sq.ft.) approx

This Floor Plan is for illustration purposes only and may not be representative of the property. The position and size of doors, windows and other features are approximate. Unauthorized reproduction prohibited. © PropertyBOX