



 3
Bedrooms

 1
Bathroom



A chance to buy a beautiful 3 bedroom family home with two receptions on a corner plot! within walking distance to the ever popular Snodland CofE Primary School, train station & local shops, as well as Leybourne Lakes on your doorstep this could be the ideal location for many.

Park your car at ease on the driveway to the rear of the property and come on in. The sellers are currently refurbishing the property & have recently installed a new Kitchen complete with built in appliances, as well as a new bathroom complete with under floor heating and more. The large lounge makes for a perfect space for entertaining family and friends, the kitchen opens up onto a great sized dining area overlooking the garden giving you even more space for the family to spread out.

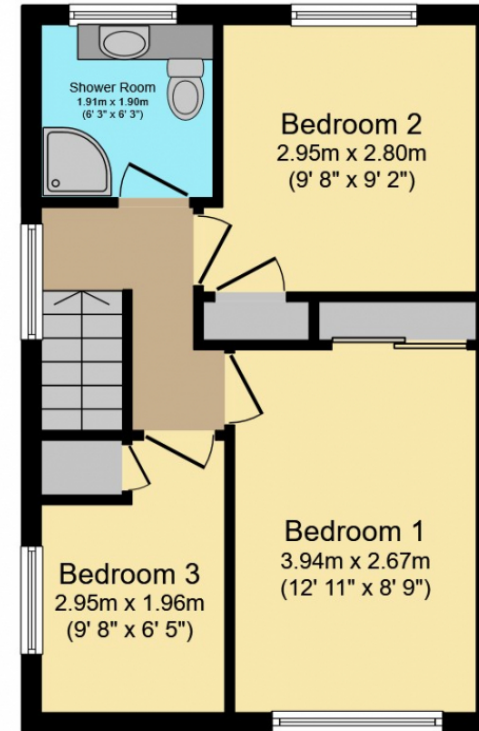
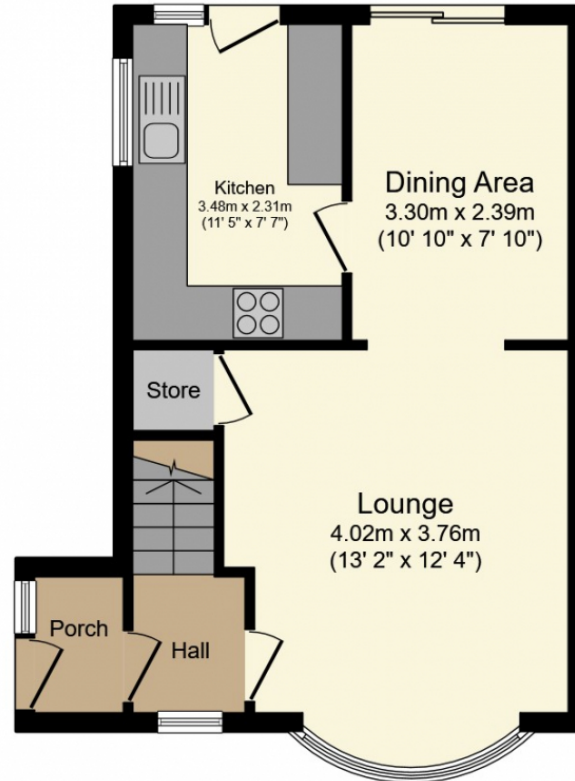
On the first floor is where you will find bedroom 1 in which you will find the sellers have created a large wardrobe area, whilst keeping the bedroom a very good size, bedroom two is another great sized double with plenty of room for all the usual furniture whilst bedroom 3 is a very good sized single bedroom.

With the added benefit of a garage & drive at the rear of the garden home working wont be an issue as it is fully powered - this is a property you will not want to miss!

Snodland benefits from a good selection of local shops and services with a bus service into either Strood town centre, or West Malling. There is easy access to the A228 that leads through to both the M20 and M2, whilst the Snodland station has direct commuter trains to London. The nearby Medway Valley offers a large cinema, gym, 10 pin bowling and dining out. The nearby historic Rochester and West Malling both offer a great selection of pubs, bars and restaurants.

Call today to arrange your appointment to view





Total floor area 75.5 sq.m. (813 sq.ft.) approx

This Floor Plan is for illustration purposes only and may not be representative of the property. The position and size of doors, windows and other features are approximate. Unauthorized reproduction prohibited. © PropertyBOX