



3

Bedrooms



1

Bathroom



Picture Perfect! Rural life doesn't get much better than this. Situated on a private road overlooking nothing but fields & the north downs! The best bit is that the current vendors have done everything for you! All you need to do is unpack! With the added benefit of two parking spaces!

Downstairs the property benefits a stunning modern country kitchen with ample storage space and built in appliances, as well as a feature butler sink. Just off the kitchen you will find the modern family bathroom complete with shower over the bath.

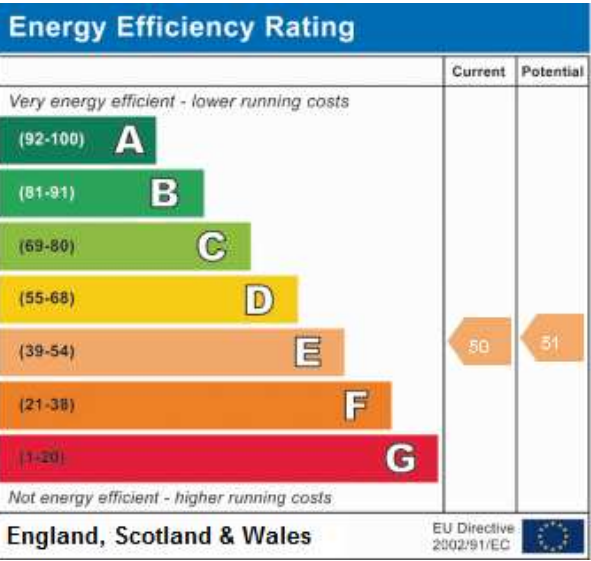
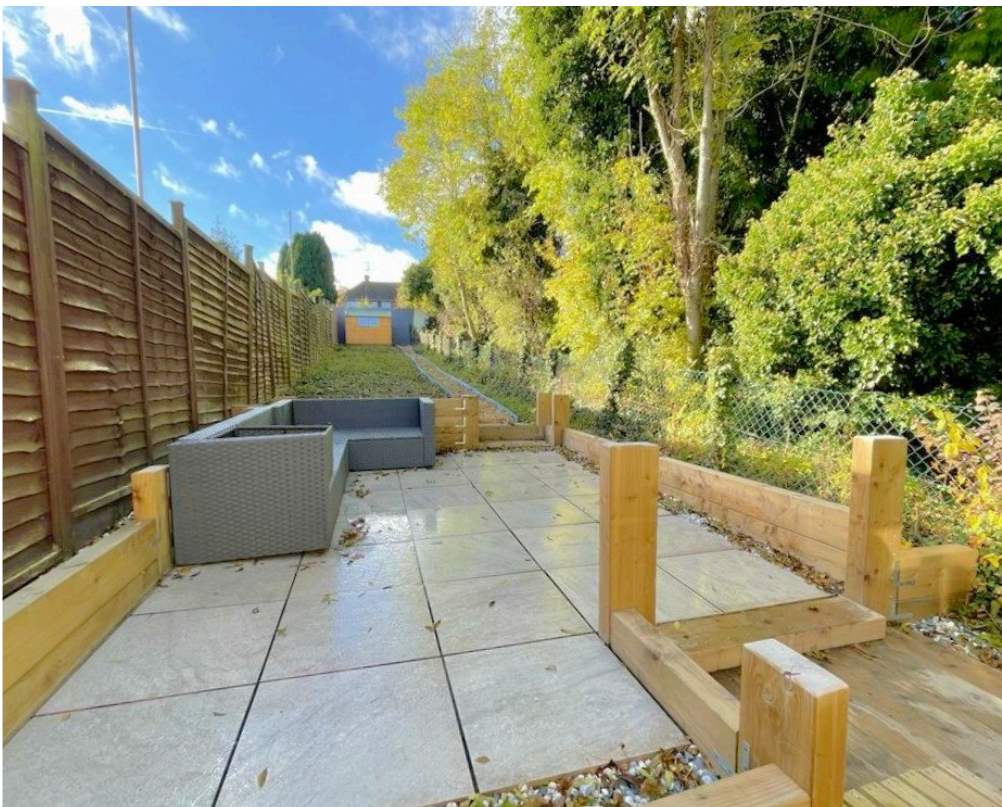
The dining room is the perfect space for entertaining friends and family with countryside views, The good sized lounge features a big fireplace which can be opened up to be used as a working fire, which would add to the ambience of countryside living - especially on those cold winter nights!

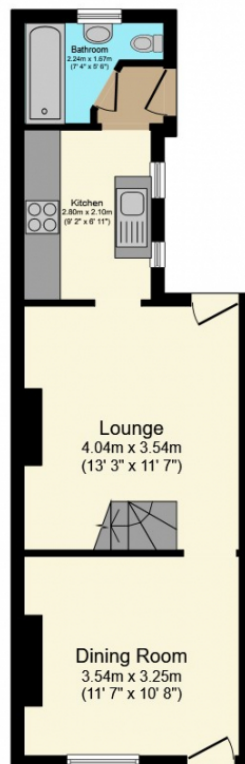
The long rear garden is a fantastic size for you to create your own escape from busy day to day life - imagine relaxing with nothing but the sounds of the peaceful village surroundings!

Upstairs you will find the large master bedroom offering plenty of room for wardrobes and other bedroom furniture, with access through to the third bedroom which would make for a perfect creche, or potential to add another bathroom! The second bedroom is another very big double offering beautiful countryside views.

Located in the sought after village of Upper Halling, providing excellent links to the M20 motorway as well as M2, the village benefits from a selection of local shops and services with a bus service into either Strood town centre or West Malling, whilst Halling rail station has commuter trains to London via Strood. Excellent transport links nearby include Snodland train station. This station has a direct service to London which takes 45 minutes.

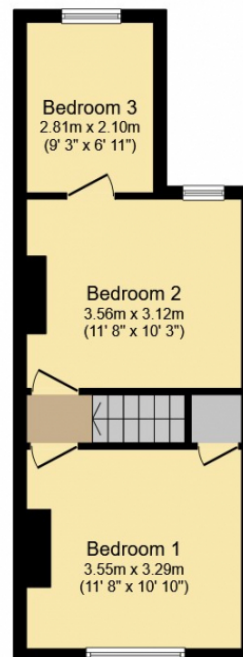
You are a short distance from the beautiful Leybourne Lake Country Park which boasts great outdoor activities and is perfect for peaceful countryside walks for all of the family. The nearby historic Rochester and West Malling both offer a great selection of pubs, bars and restaurants. Call today to arrange your appointment to view





Ground Floor

Floor area 36.5 sq.m.
(392 sq.ft.) approx



First Floor

Floor area 32.4 sq.m.
(349 sq.ft.) approx

Total floor area 68.9 sq.m. (741 sq.ft.) approx

This Floor Plan is for illustration purposes only and may not be representative of the property. The position and size of doors, windows and other features are approximate. Unauthorized reproduction prohibited. © PropertyBOX