



2

Bedrooms



2

Bathrooms



Located on the ever popular and very sought after holborough lakes development, this beautiful GROUND floor two double bedroom apartment is not one to miss.

The property benefits from a large, bright, open living area with sliding doors onto the large balcony. A great space to catch the afternoon sun.

The two bedrooms are both fantastic sized doubles, with the second benefiting built in wardrobes, both the family shower room and the en-suite bathroom are finished to a high spec.

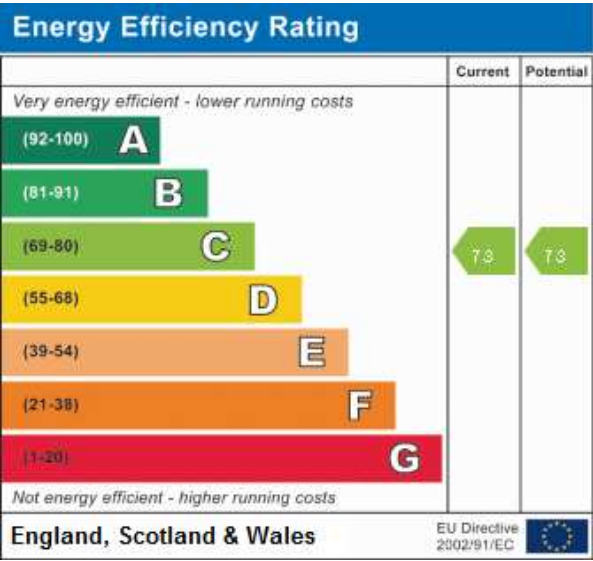
The fitted kitchen includes; stainless steel oven, ceramic hob with extractor over and integrated fridge and freezer, dishwasher and washing/tumble dryer.

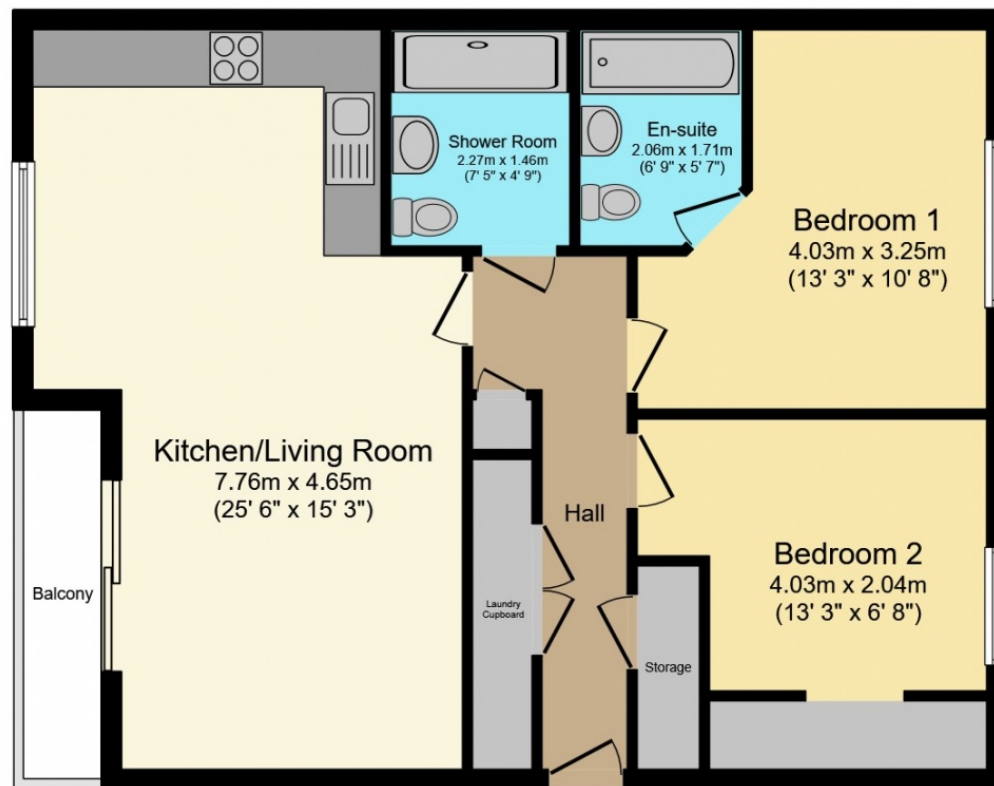
Externally there are well kept grounds, family friendly area's with various child friendly safe playgrounds and parking. This apartment comes with allocated parking.

The holborough lakes development benefits from vast landscaped areas including waterside pathways, mature trees and lakes all with the backdrop of the north downs.

For the active out there, there is an on-site gym, activity trail and swimming club on site. The development is well located for both the m20 and m2 for easy access to the m25. Rail connections are provided at the nearby Snodland railway station with its fast service into London. For those who like shopping, Bluewater is just over 20 minutes via car, whilst the historic towns of Rochester and Maidstone can be reached in around 15 minutes by car, both providing the services you would expect from significant towns.

Call today to arrange your appointment to view.





Floor Plan

Floor area 74.0 sq.m. (797 sq.ft.) approx

Total floor area 74.0 sq.m. (797 sq.ft.) approx

This Floor Plan is for illustration purposes only and may not be representative of the property. The position and size of doors, windows and other features are approximate. Unauthorized reproduction prohibited. © PropertyBOX