



2

Bedrooms



1

Bathroom



Bright and spacious two double-bedroom apartment set in a well-maintained block in New Barnet.

The large reception room offers ample light and space with stunning views over London, with the ample sized kitchen neatly adjoining.

The property boasts two large double bedrooms and plenty of storage options with wooden flooring and carpet throughout.

Bright and spacious two double-bedroom apartment set in a well-maintained block in New Barnet available with a share of the freehold and garage. The large reception room offers ample light and space with stunning views over London, with the kitchen neatly adjoining. The property boasts two large double bedrooms and plenty of storage options with wooden flooring and carpet throughout.

The property has use of the large, well maintained communal gardens.

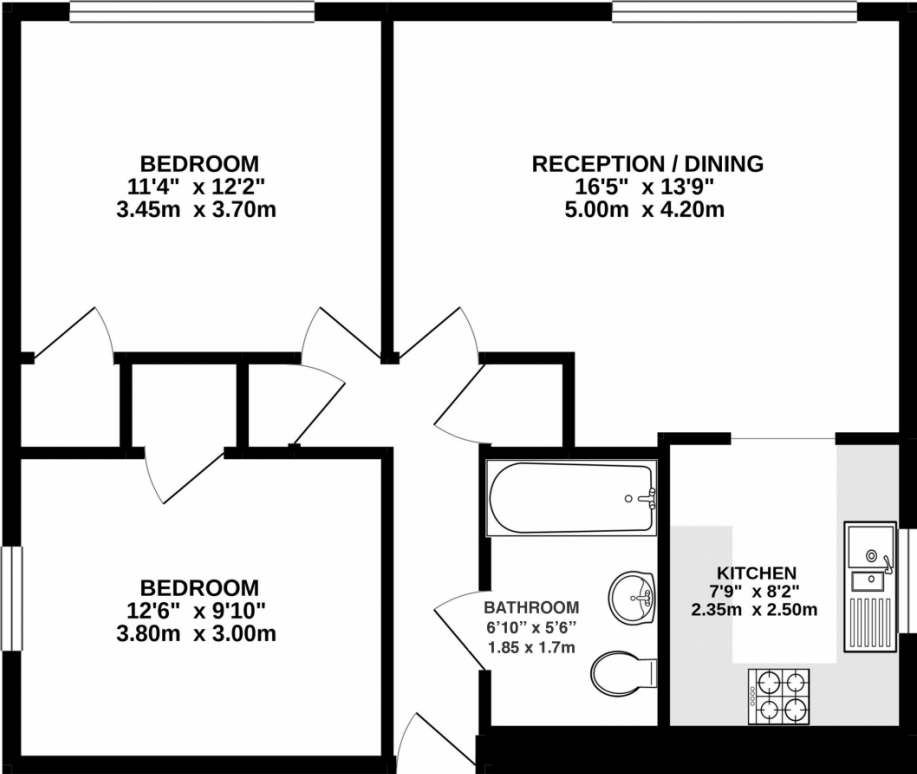
Large Private Garage included.

Share of Freehold.

Service charge £110 per month

The property is located minutes from New Barnet Station, with direct links to central London and a short distance from all the local amenities the area has to offer.

AVAILABLE CHAIN FREE



TOTAL FLOOR AREA : 723 sq.ft. (67.2 sq.m.) approx.

Whilst every attempt has been made to ensure the accuracy of the floorplan contained here, measurements of doors, windows, rooms and any other items are approximate and no responsibility is taken for any error, omission or mis-statement. This plan is for illustrative purposes only and should be used as such by any prospective purchaser. The services, systems and appliances shown have not been tested and no guarantee as to their operability or efficiency can be given.

