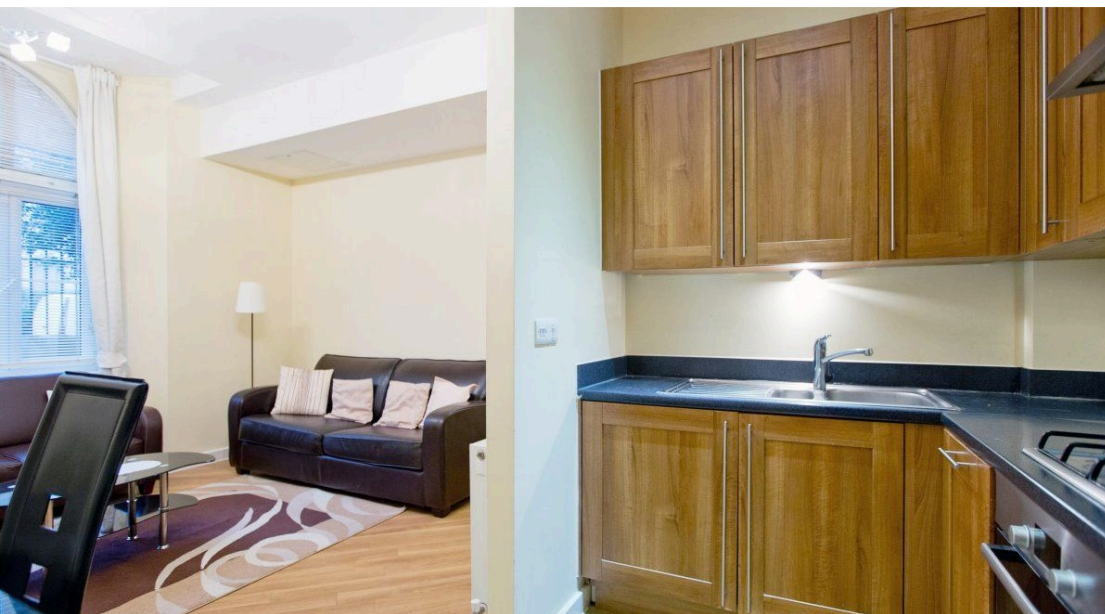




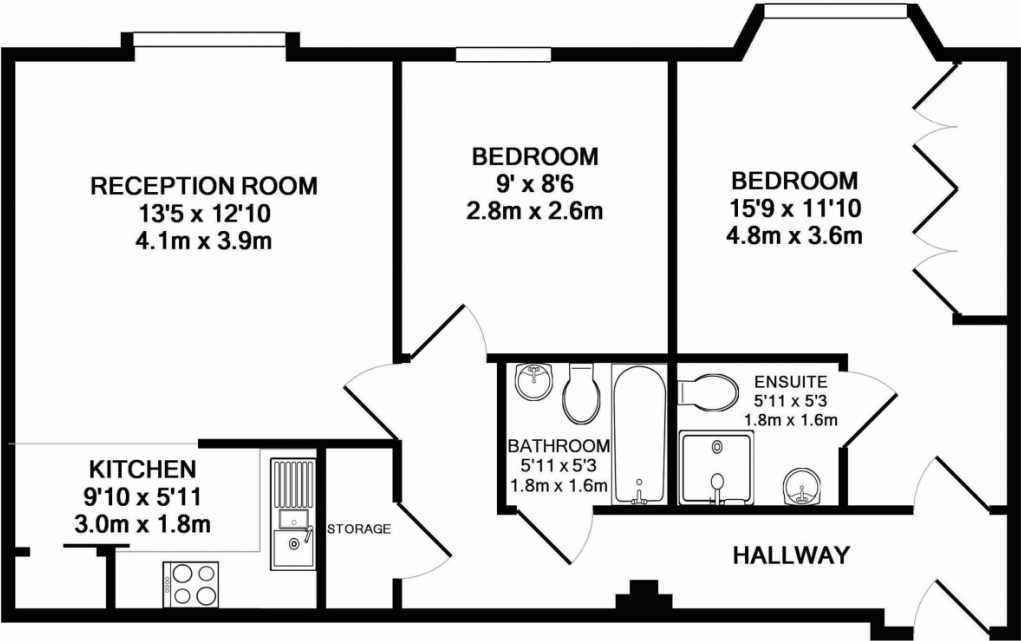
 **2**
Bedrooms

 **2**
Bathrooms



Bright and spacious, two double bedroom apartment set on the ground floor of Academy Court in the heart of Kilburn

Desirable Residences are proud to present this bright and spacious apartment set on the ground floor of Academy Court in the heart of Kilburn. The property boasts two double bedrooms, one of which has an en suite bathroom. The large south facing reception with open-plan kitchen is a great space. With wooden floors throughout, an entry phone and fob system, and parking space at the rear this property is a great investment. Located minutes' walk from both Overground and Underground transport links.



TOTAL APPROX. FLOOR AREA 688 SQ.FT. (63.9 SQ.M.)

Whilst every attempt has been made to ensure the accuracy of the floor plan contained here, measurements of doors, windows, rooms and any other items are approximate and no responsibility is taken for any error, omission, or mis-statement. This plan is for illustrative purposes only and should be used as such by any prospective purchaser. The services, systems and appliances shown have not been tested and no guarantee as to their operability or efficiency can be given

