



3

Bedrooms



1

Bathroom



AVAILABLE NOW | Three Bedrooms | 1930's Peter Dean Home |
DRIVEWAY FOR TWO CARS | 920 SQFT | Attractive Rear Garden |
SOUGHT AFTER LOCATION | Excellent Transport Links | Two Reception
Rooms...

Gracechurch Property Services are delighted to offer this THREE BEDROOM 1930's PETER DEAN FAMILY HOME situated on a residential turning of Upper Edmonton N18, on the borders of Palmers Green N13. This property has been well maintained and reconfigured to provide an open plan living/dining area with a further reception room. On the first floor, there are two double bedrooms, one large single bedroom and a family bathroom.

Outside is a private two-tiered rear garden with a paved patio entertaining area and remainder laid to lawn. To the front there is a private driveway.

The property is on a popular road with families, being close to outstanding schools, bus routes and train stations under a mile away.

Other Information...

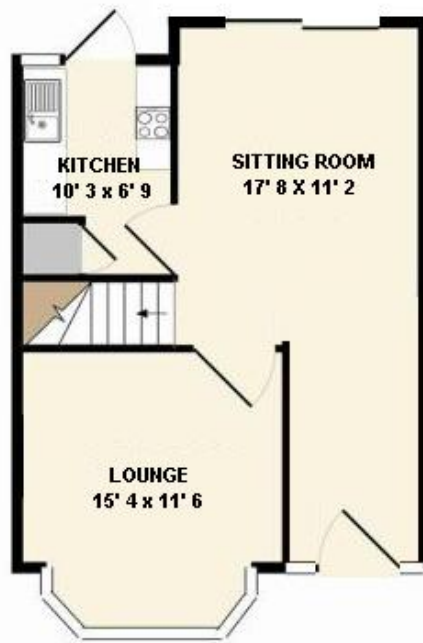
Parking Arrangements: Off Street Parking for 2 Cars

Council Tax Band: E

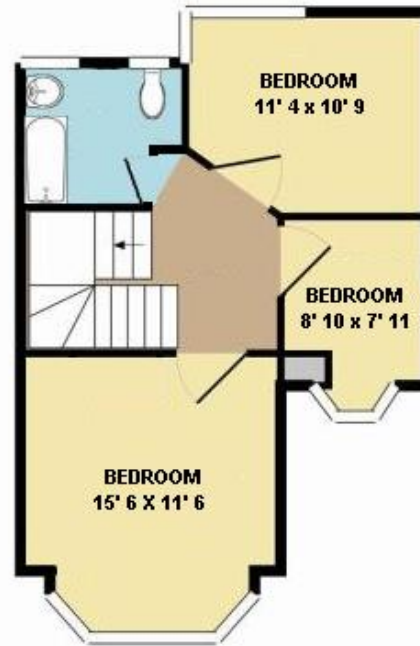
Windows Installed: UPVC Double Glazed

Location of Boiler: Kitchen

Garden Direction: South Facing



GROUND FLOOR



1ST FLOOR

