



- London W1H
- £525,000



1 Bedroom



1 Bathroom

A beautifully presented, recently refurbished third floor studio apartment in a well located portered block. Well kept communal areas, lift. Private entrance hall, bright living room semi open plan to double bedroom (could be separated) built in wardrobes, compact kitchen, part tiled shower room, double glazed windows, gas fired central heating. Moments from all facilities of Edgware Road and with great transport links. Early viewing highly recommended.

Floor area: 32 sq. m. / 348 sq. ft.

Studio flat on 3rd floor, portered block.

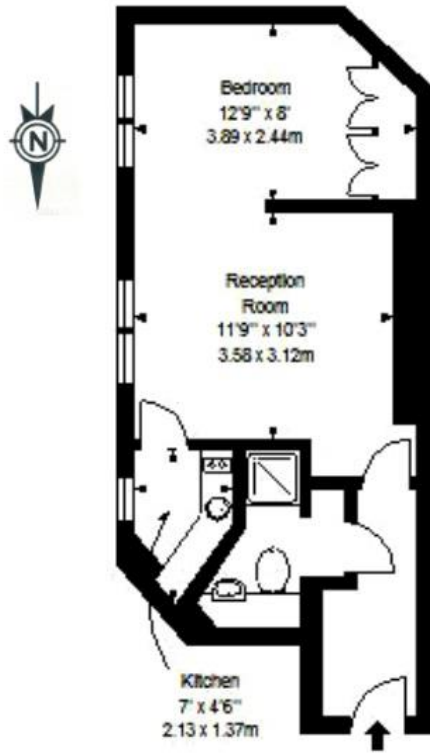
Lease 900 years.

Service charge: £3000 pa

Ground Rent : £120



GROSS INTERNAL FLOOR AREA
348 SQ FT/32.39 SQ M



Third Floor

