

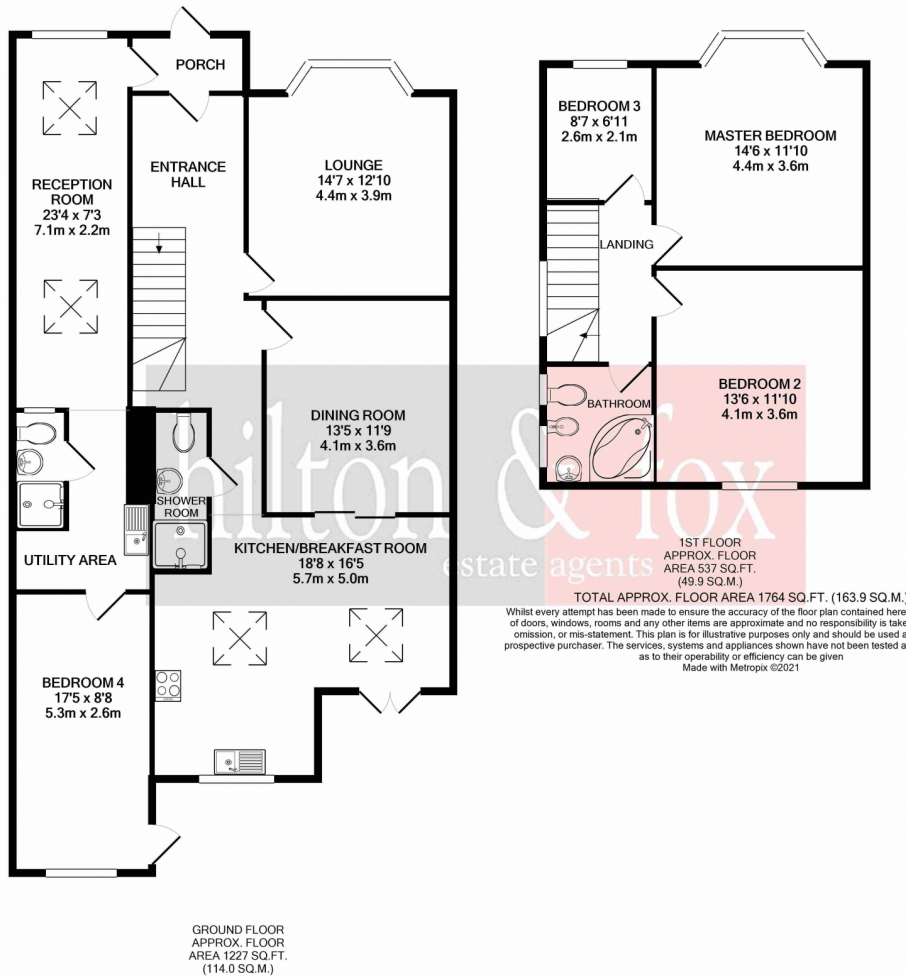


 **4**
Bedrooms

 **3**
Bathrooms



Located on this highly popular road backing onto Sudbury Golf Club is this extended Four Bedroom family home. Internally you will find the property has a lounge, dining room, a family kitchen/breakfast room, shower room and a self contained annex to the side. To the first floor you will find all three bedrooms and the family bathroom. Externally to the front there is off street parking for a number of cars whilst to the rear a south facing garden which is approximately 80ft back backs directly on to the Golf Club giving you amazing views.



Whilst every attempt has been made to ensure the accuracy of the floor plan contained here, measurements of doors, windows, rooms and any other items are approximate and no responsibility is taken for any error, omission, or mis-statement. This plan is for illustrative purposes only and should be used as such by any prospective purchaser. The services, systems and appliances shown have not been tested and no guarantee as to their operability or efficiency can be given.
Made with Metropix ©2021

