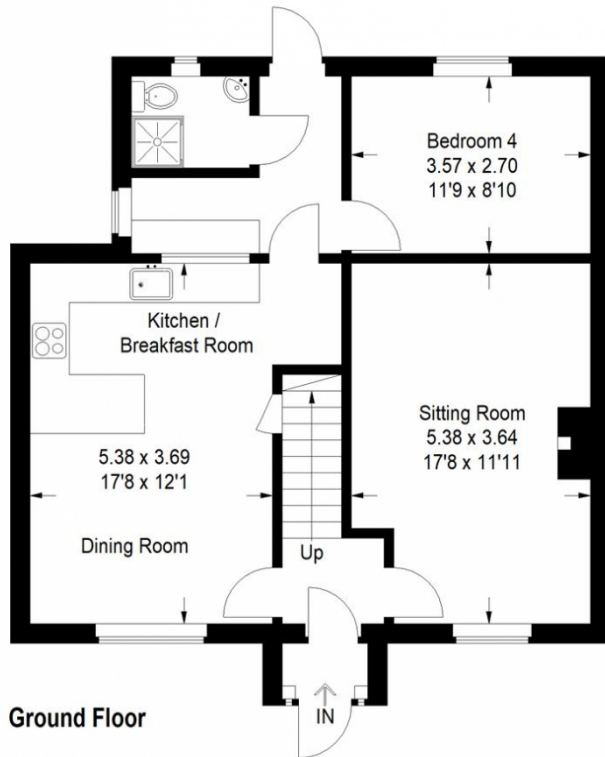


 4  
Bedrooms

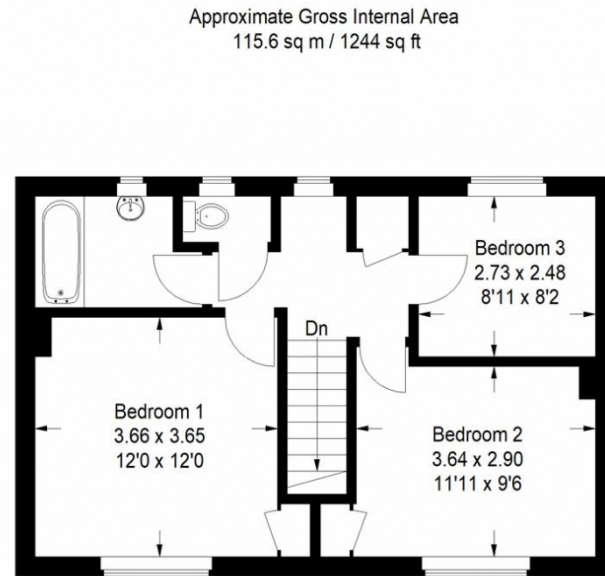
 2  
Bathrooms

Located just a short distance from Ealing road is this spacious extended semi-detached family home. Internally the property is presented in good condition and has a large lounge, large kitchen/diner, shower room and forth bedroom/study all on the ground floor. On the first floor you will find a further three bedrooms, the family bathroom and separate WC. Externally there is off street parking to the front and a large private family garden to the rear.

Located just a short distance from Ealing road is this spacious extended semi-detached family home. Internally the property is presented in good condition and has a large lounge, large kitchen/diner, shower room and forth bedroom/study all on the ground floor. On the first floor you will find a further three bedrooms, the family bathroom and separate WC. Externally there is off street parking to the front and a large private family garden to the rear.



Ground Floor



First Floor

Approximate Gross Internal Area  
115.6 sq m / 1244 sq ft

Illustration for identification purposes only, measurements are approximate, not to scale.

