



 **4**  
Bedrooms

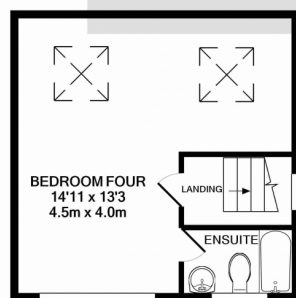
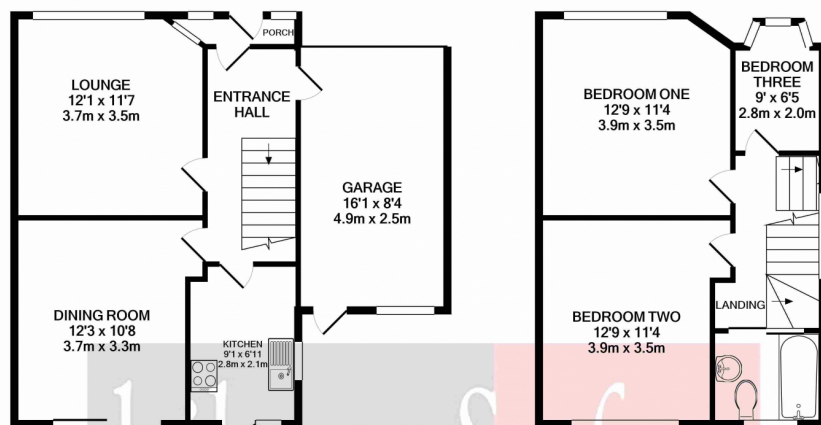
 **2**  
Bathrooms





Presented in stunning condition throughout is this extended Four bedroom semi-detached Family home. Internally to the ground floor you will find a lounge, dining room, kitchen and access to the garage, to the first floor you will find three bedrooms and the family bathroom, to the top floor there is a large double bedroom with the benefit of a en-suite shower room. Externally to the front there is off street parking which leads you to your own garage and to the rear a private family garden. The property is also positioned to give you easy access to a range of shops and transport links.





**TOTAL APPROX. FLOOR AREA 1294 SQ.FT. (120.2 SQ.M.)**

Whilst every attempt has been made to ensure the accuracy of the floor plan contained here, measurements of doors, windows, rooms and any other items are approximate and no responsibility is taken for any error, omission, or mis-statement. This plan is for illustrative purposes only and should be used as such by any prospective purchaser. The services, systems and appliances shown have not been tested and no guarantee as to their operability or efficiency can be given

Made with Metropix ©2021

