

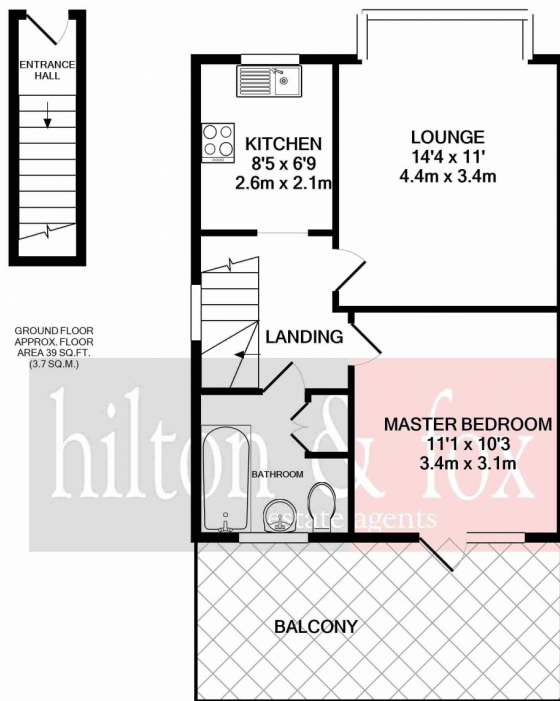


 1
Bedroom

 1
Bathroom



Located on the ever increasing in popularity Mount Pleasant is this first floor one bedroom maisonette. Internally you will find the property is offered in good condition, with a large lounge, double bedroom, family kitchen and family bathroom. You will also find the property is offered with a new 125 year lease, parking and a roof terrace located off the bedroom. All in all this is a unique opportunity.



GROUND FLOOR
APPROX. FLOOR
AREA 39 SQ.FT.
(3.7 SQ.M.)

1ST FLOOR
APPROX. FLOOR
AREA 431 SQ.FT.
(40.0 SQ.M.)

TOTAL APPROX. FLOOR AREA 470 SQ.FT. (43.6 SQ.M.)

Whilst every attempt has been made to ensure the accuracy of the floor plan contained here, measurements of doors, windows, rooms and any other items are approximate and no responsibility is taken for any error, omission, or mis-statement. This plan is for illustrative purposes only and should be used as such by any prospective purchaser. The services, systems and appliances shown have not been tested and no guarantee as to their operability or efficiency can be given
Made with Metropix ©2021





Popat Stores

VB & Sons Wembley

One Tree Hill
Recreation
Ground

Shri Vallabh Nidhi
Mandir - Ealing Road

Alperton Community
School (Upper Site)

Alperton
Community School

London Shootfighters

London Motorcycle
Centre (LMC)

PIRATE.COM -
Rehearsal Studios

Sainsbury's

Sainsbury's Petrol Station

Alperton Police Base

Hoo Hing - Park Royal