



**3**

**Bedrooms**



**2**

**Bathrooms**



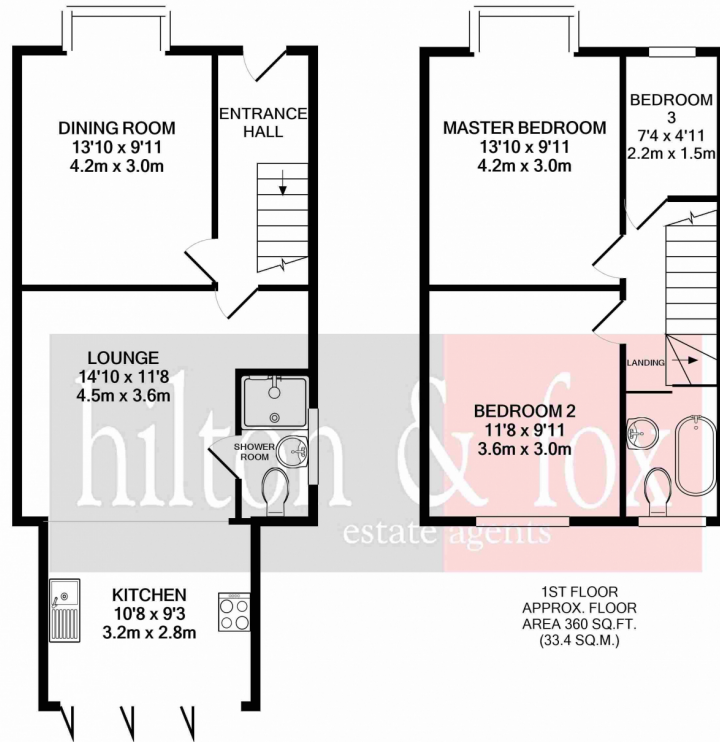


Offered to the market in stunning condition and finished to the highest standard throughout is this extended Three Bedroom family home.

Internally to the ground floor you will find a dining room, guests shower room, a large open plan lounge to kitchen with various integrated units and granite worksurfaces. To the first floor you will find all three of the bedrooms and the family bathroom with a fabulous roll top bath.

Externally to the rear there is a large garden with driveway access to the furthest part.

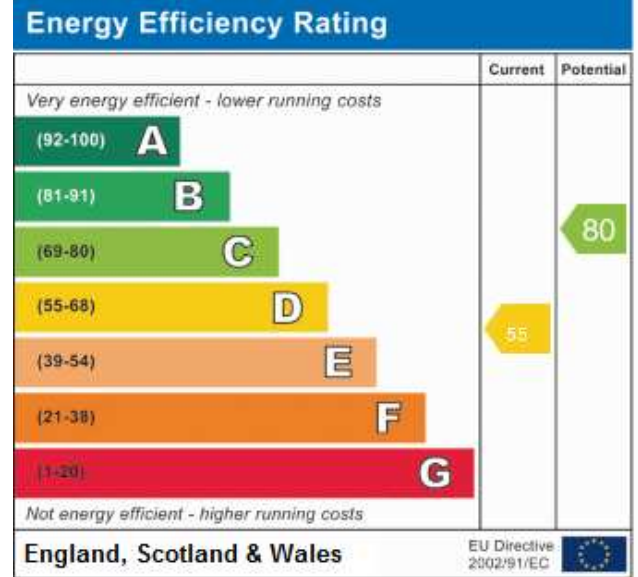
All in all this is one not to be missed.



GROUND FLOOR  
APPROX. FLOOR  
AREA 457 SQ.FT.  
(42.5 SQ.M.)

TOTAL APPROX. FLOOR AREA 817 SQ.FT. (75.9 SQ.M.)

Whilst every attempt has been made to ensure the accuracy of the floor plan contained here, measurements of doors, windows, rooms and any other items are approximate and no responsibility is taken for any error, omission, or mis-statement. This plan is for illustrative purposes only and should be used as such by any prospective purchaser. The services, systems and appliances shown have not been tested and no guarantee as to their operability or efficiency can be given  
Made with Metropix ©2021







UNCLE Wembley

Wembley Stadium

Primark

Wembley Police Station

Wembley Central

Ark Elvin Academy

Wembley Central Square Park

Cha Sha Wembley

Sakonis

Wembley