

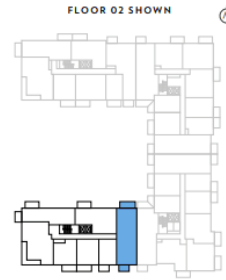
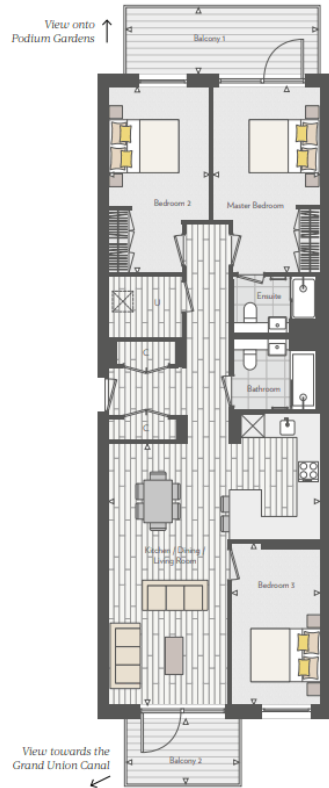


 **1**  
**Bedroom**

 **1**  
**Bathroom**



A selection of high specification one, two and three-bedroom new build flats. Offered with a 10 year NHBC warranty plus a 2 year St George warranty and a range of facilities like cinema, bowling alley, shops, bars and restaurants this is due to be one of this pinnacle points of the Alperton regeneration project. The site is set for full completion for the third quarter of 2023 and is a spectacular development that needs to be seen. If you would like to view this, please contact us straight away to book an appointment around the show homes.



APARTMENT TOTAL INTERNAL AREA	103.6 sq.m	1,115 sq.ft
APARTMENT TOTAL EXTERNAL AREA	15.3 sq.m	165 sq.ft
Kitchen / Dining / Living Room	7.35m x 5.97m	24' 1" x 19' 7"
Master Bedroom	5.25m x 3.01m	17' 2" x 9' 10"
Bedroom 2	5.25m x 2.87m	17' 2" x 9' 5"
Bedroom 3	4.55m x 2.50m	14' 11" x 8' 2"
Balcony 1	5.36m x 1.81m	17' 7" x 5' 11"
Balcony 2	3.11m x 1.81m	10' 2" x 5' 11"





Taste of Peshawar

VB & Sons Wembley

Alperton Community School (Upper Site)

Stonebridge Park

Ace Cafe London

PIRATE.COM - Rehearsal Studios

Superhire

Travelodge London Wembley

Bestway Group

Premier Park

Hoo Hing - Park Royal

FCI London

Abbey Road Household Reuse and Recycling...

Screwfix