



5

Bedrooms



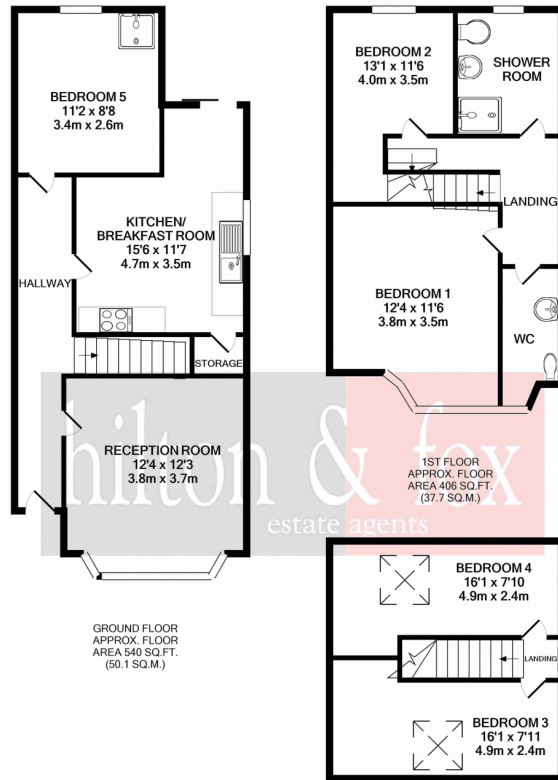
2

Bathrooms



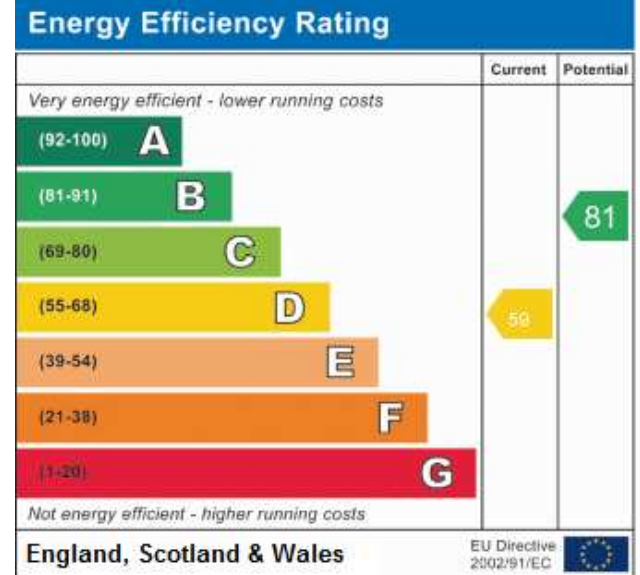


This extended and good condition five double bedroom end-terrace family home is located just off the Harrow Road in Sudbury. Just a short distance from Harrow on the Hill and its range of popular Schools and facilities this property is not one to be missed. On the ground floor you will find a lounge, a large family kitchen and one of the five bedrooms which has the benefit of an en-suite shower. To the first floor there are another two bedrooms, family bathroom and an additional WC. To the top floor there are another two double bedrooms. Externally there is a low maintenance garden to the rear housing a brick-built summerhouse/storage area. All in all, this is one not to be missed.



Whilst every attempt has been made to ensure the accuracy of the floor plan contained here, measurements of doors, windows, rooms and any other items are approximate and no responsibility is taken for any error, omission, or mis-statement. This plan is for illustrative purposes only and should be used as such by any prospective purchaser. The services, systems and appliances shown have not been tested and no guarantee as to their operability or efficiency can be given.

Made with Metropix ©2021







BMI The Clementine Churchill Hospital

Sudbury Fields - The John Lyon School...

Buchanan Court Care Home - Care UK

Harrow Cricket Club

The Black Horse

Little Lionhearts Nursery School

Shell

Vale Farm Sports Centre

Partyman World of Play

Sudbury Hill Harrow

Sudbury Hill

Mieszko Polski Supermarket

Harrow Road Post Office

The Aura

Sudbury & Harrow Road