



3

Bedrooms

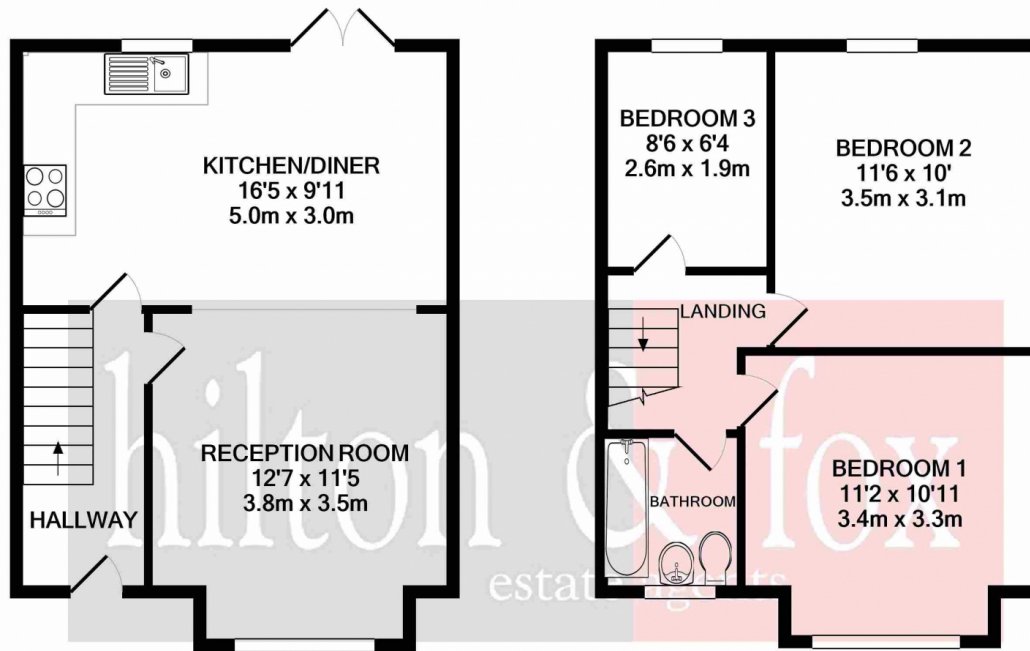


1

Bathroom



Located just off the High Street and presented in good condition throughout is this three bedroom terrace family home. Internally to the ground floor you will find a separate living room, open plan kitchen/diner leading to a well maintained private rear garden. The first floor comprises of all 3 bedrooms and well as a family bathroom. Harrow and Wealdstone train and underground station is a short walk away, as are local amenities. The property is being offered chain free an internal inspection is highly recommended.



GROUND FLOOR
APPROX. FLOOR
AREA 352 SQ.FT.
(32.7 SQ.M.)

1ST FLOOR
APPROX. FLOOR
AREA 351 SQ.FT.
(32.6 SQ.M.)

TOTAL APPROX. FLOOR AREA 703 SQ.FT. (65.3 SQ.M.)

Whilst every attempt has been made to ensure the accuracy of the floor plan contained here, measurements of doors, windows, rooms and any other items are approximate and no responsibility is taken for any error, omission, or mis-statement. This plan is for illustrative purposes only and should be used as such by any prospective purchaser. The services, systems and appliances shown have not been tested and no guarantee as to their operability or efficiency can be given
Made with Metropix ©2021

