



3

Bedrooms



1

Bathroom



A great opportunity to acquire this nice 3 bedroom house in a good location with many potential to add value to it. The property comprises of good size double bedroom with one single room. Big size living room, lovely designed kitchen with an island, extra office space for professionals working from home or a play area for the family.

The property has potential for loft conversion and the kitchen can be further extended (subject to planning). The kitchen is open to a massive rear garden with natural light coming through.

Off street parking for two cars in front of the property on a quiet road. This property is close to local amenities and shops.. Crystal palace football club is only 4mins walk, and also easy access to Thorn heath station.

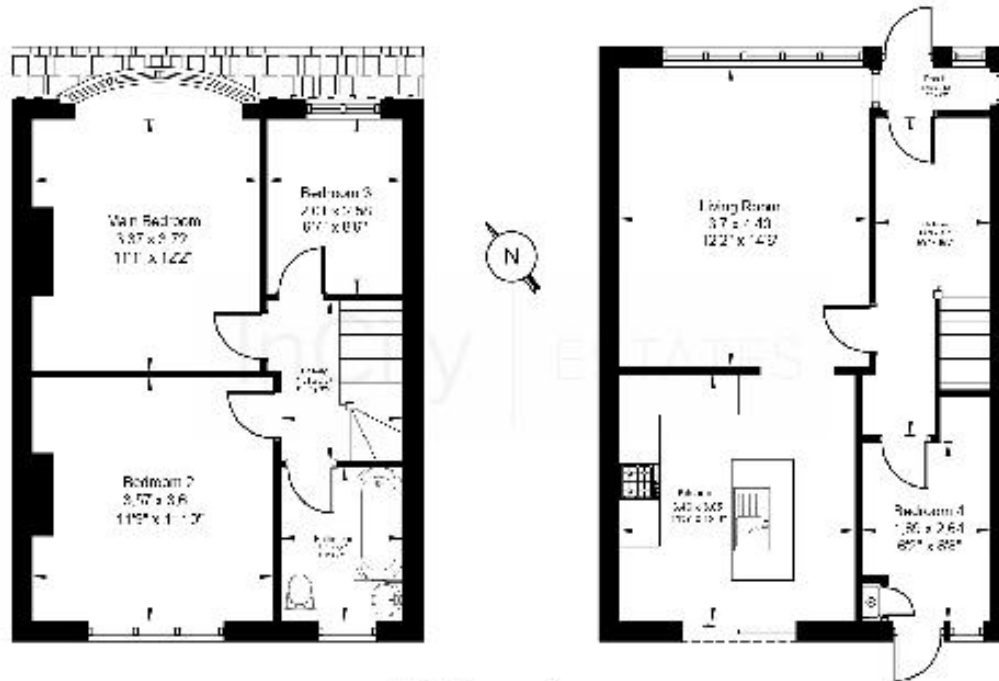
Features:

Potential to add value to the property

Off street parking

4mins to Crystal Palace football club

Easy access to array of shops and Sainsbury.



Mid-Terrace House

Gross Internal Area
58.53m² (629 sq ft)

EPC Rating: E4 (Low Energy Rating)

72-hour money returned guarantee: If you are not 100% satisfied with the floor plan or the house, we will return your money within 72 hours of the completion of the sale.

