



# INTERLET

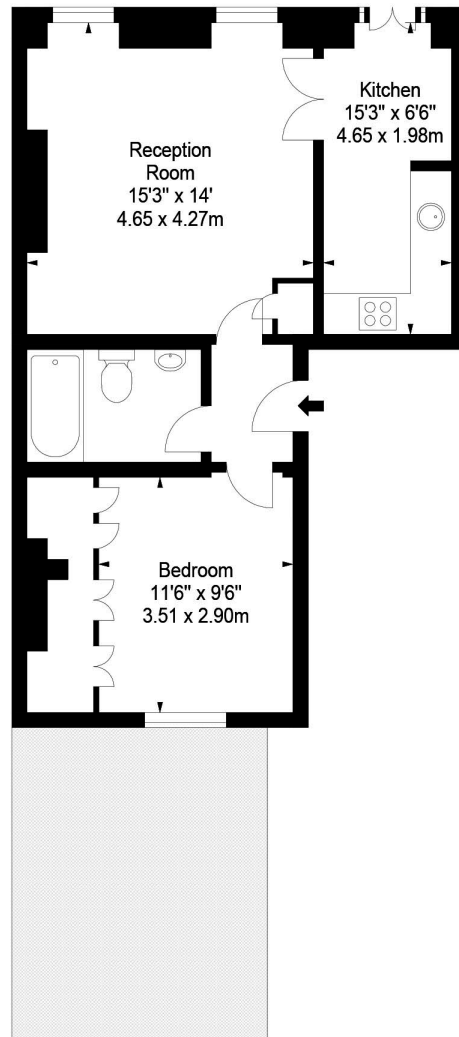
CEDAR HOUSE, NOTTINGHAM PLACE, MARYLEBONE, LONDON  
WIU  
£650 PW



A lovely one double bedroom patio apartment in the heart of fashionable Marylebone available now for SHORT or LONG let. The flat comprises of a large reception room with double doors leading to the kitchen with access to a much sought-after patio area. Apartment also benefits from good-sized double room and modern bathroom. Available Furnished or Unfurnished. Cedar House is located just a stones' throw away from Baker Street Station (Jubilee, Piccadilly, Metropolitan, Hammersmith & Circle Lines), this apartment is situated in an area full of amenities. Local bars, cafes, restaurants, retail shops and much more are all within an easy reach along Baker Street as well as Oxford Street. Marylebone (National Rail and Bakerloo Line) and Edgware Road (District, Circle and Hammersmith & City Lines) are also easily reached via bus routes.[...]

l e t t i n g s @ i n t e r l e t . c o m  
+ 4 4 ( 0 ) 2 0 7 7 9 5 6 5 2 5  
w w w . i n t e r l e t . c o m





## Important Notice

Interlet and their clients give notice that: 1) They are not authorised to make or give any representations or warranties in relation to the property, either here or else where. The particulars do not form part of any offer part of any offer or contract and must not be relied upon as statements or representations of fact. 2. Any areas, measurements, distances are approximate. The text, images and plans are for guidance only and are not necessarily comprehensive. It should not be assumed that the property has all necessary planning, building regulation or other contents and Interlet have not tested any services, equipment or facilities. Prospective tenants must satisfy themselves by inspection or otherwise. Please note that the local area may be affected by aircraft noise, you should make your own enquiries regarding any noise in the area before you make an offer.

# interlet

SALES & LETTINGS

Welcome home.