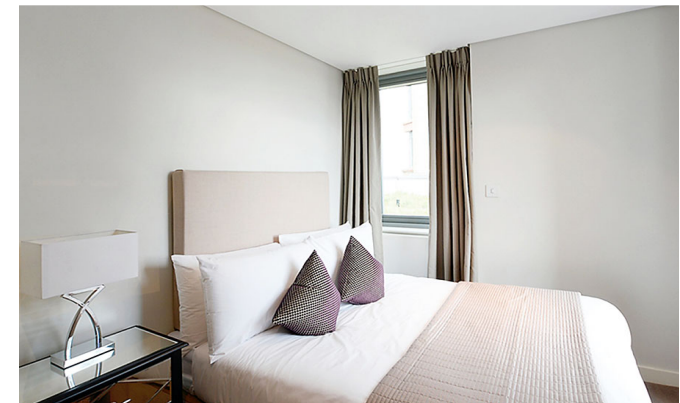




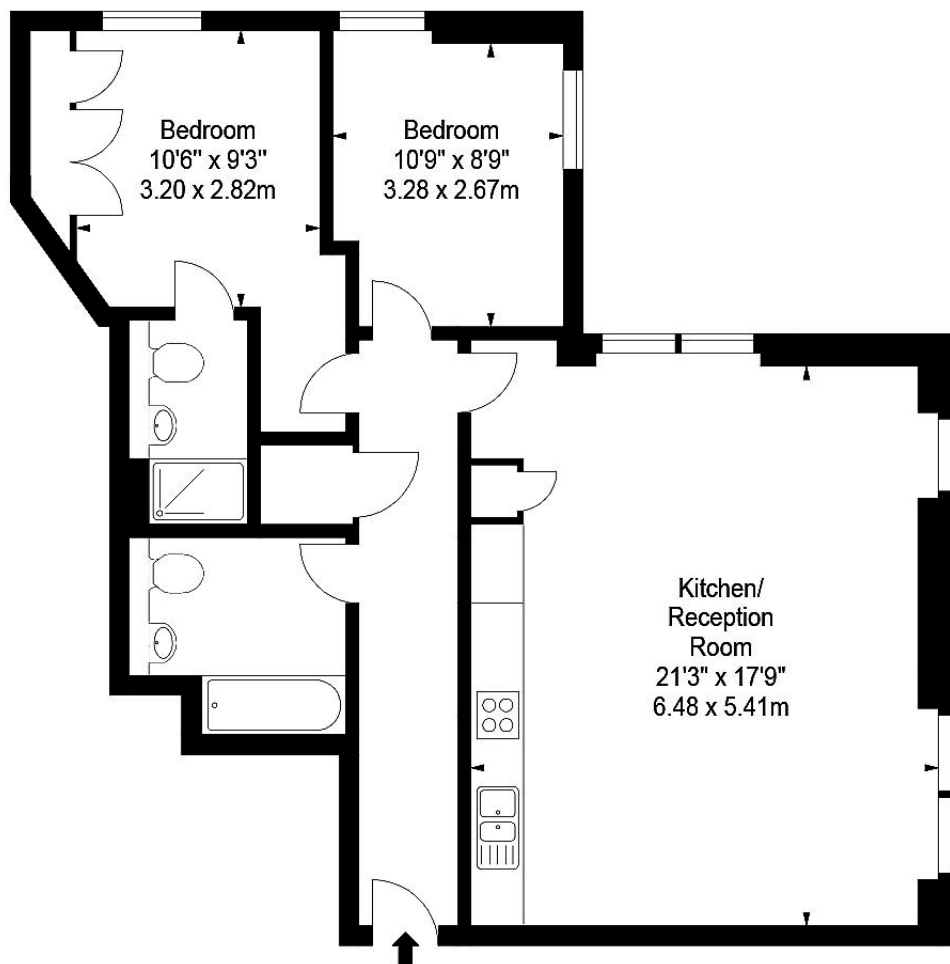
INTERLET

MERCHANT SQUARE, PADDINGTON, LONDON W2  
£900 PW



A stunning interior designed two double bedroom, two bathroom apartment in the heart of the Paddington Basin available, London W2. The apartment is situated on the ninth floor of this prestigious building which features a concierge, lift service and secure underground parking. The flat comprises spacious living and entertaining space with a beautiful reception room with superb views of the Grand Union Canal, a superb modern fitted open plan kitchen, two bedrooms, two bathrooms and ample storage space. Apartment is available now furnished or unfurnished. This apartment has been interior designed to the highest standard and is set within the heart of the Paddington Basin and close to the popular West End Quay. The property offers easy access to superb transport links such as Paddington Train Station (Bakerloo, Hammersmith & City, Circle, District lines and Heathrow Express) and Edgware Road (Circle, District and Bakerloo lines).[...]

lettings@interlet.com  
+44(0)20 7795 6525  
www.interlet.com



## Important Notice

Interlet and their clients give notice that: 1) They are not authorised to make or give any representations or warranties in relation to the property, either here or elsewhere. The particulars do not form part of any offer or contract and must not be relied upon as statements or representations of fact. 2) Any areas, measurements, and distances are approximate. The text, images, and plans are for guidance only and are not necessarily comprehensive. It should not be assumed that the property has all necessary planning, building regulation, or other contents. Interlet has not tested any services, equipment, or facilities. Prospective tenants must satisfy themselves by inspection or otherwise. Please note that the local area may be affected by aircraft noise, you should make your own inquiries regarding any noise in the area before you make an offer.

# interlet

SALES & LETTINGS

Welcome home.