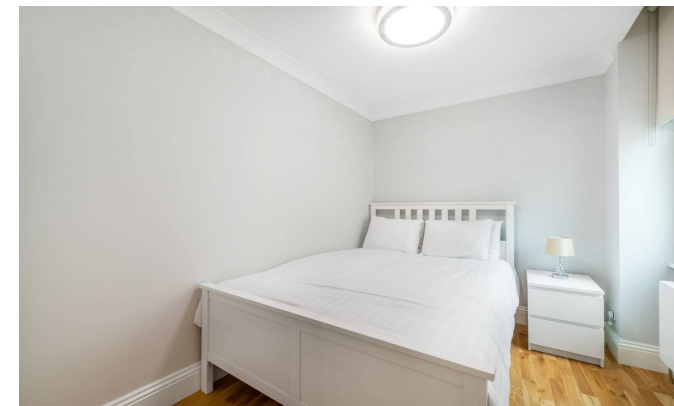




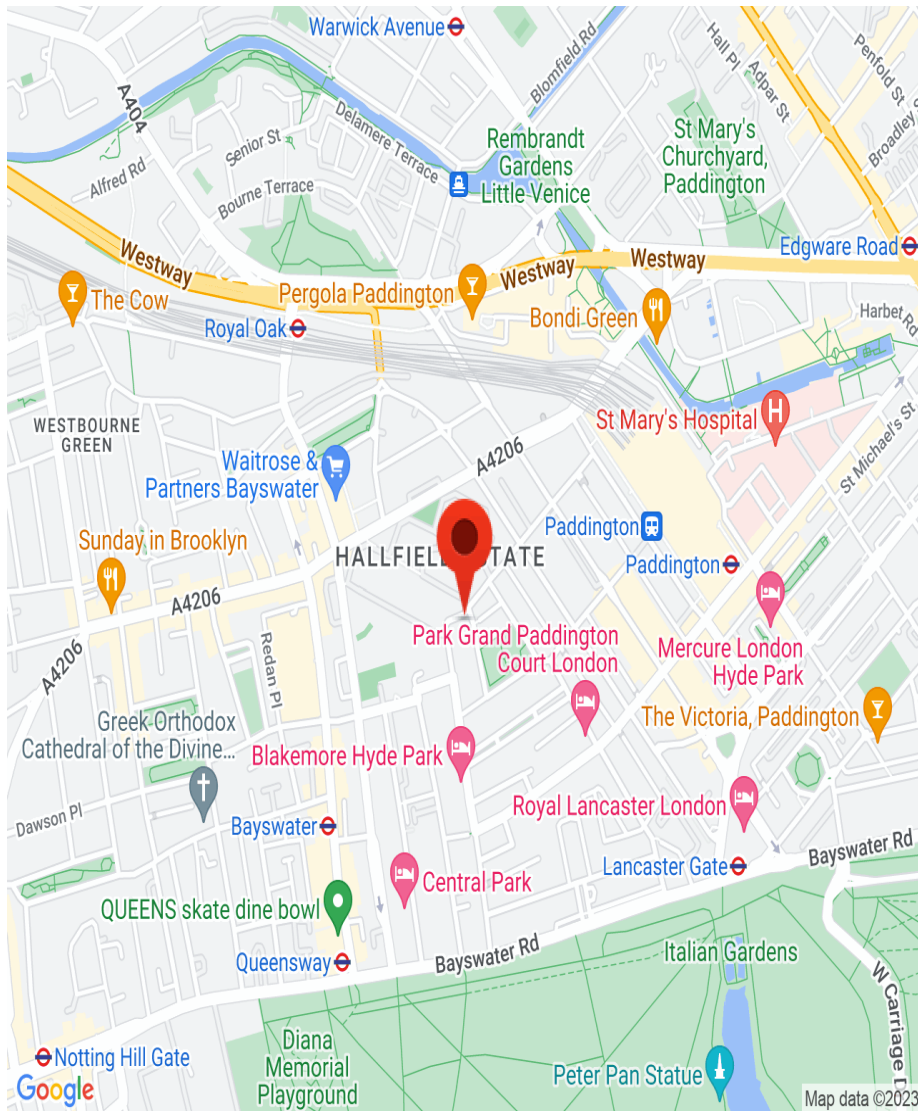
INTERLET

CLEVELAND GARDENS, BAYSWATER, LONDON W2
£440 PW



Finished to a high standard throughout, this exquisite 1 bedroom lower ground floor flat offers a generous reception room, sleek modern kitchen and is ideally situated for a variety of amenities and transport links. Cleveland Gardens is ideally positioned moments from the varied amenities and transport links of Queensway, Westbourne Grove and Paddington. The green open spaces of Hyde Park are also within easy reach.[...]

l e t t i n g s @ i n t e r l e t . c o m
+ 4 4 (0) 2 0 7 7 9 5 6 5 2 5
w w w . i n t e r l e t . c o m



Important Notice

Interlet and their clients give notice that: 1) They are not authorised to make or give any representations or warranties in relation to the property, either here or else where. The particulars do not form part of any offer part of any offer or contract and must not be relied upon as statements or representations of fact. 2. Any areas, measurements, distances are approximate. The text, images and plans are for guidance only and are not necessarily comprehensive. It should not be assumed that the property has all necessary planning, building regulation or other contents and Interlet have not tested any services, equipment or facilities. Prospective tenants must satisfy themselves by inspection or otherwise. Please note that the local area may be affected by aircraft noise, you should make your own enquiries regarding any noise in the area before you make an offer.



iNTERLET
SALES & LETTINGS

Welcome home.