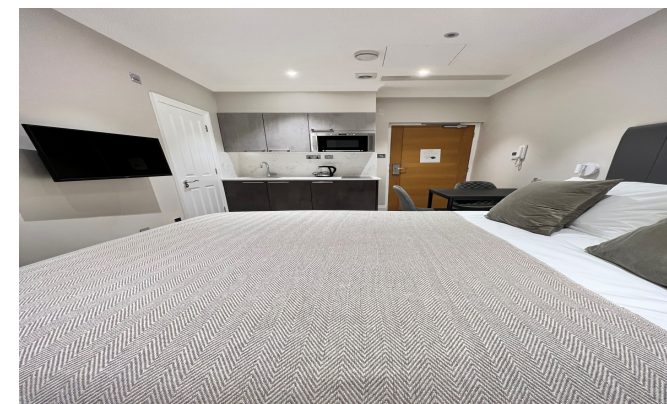




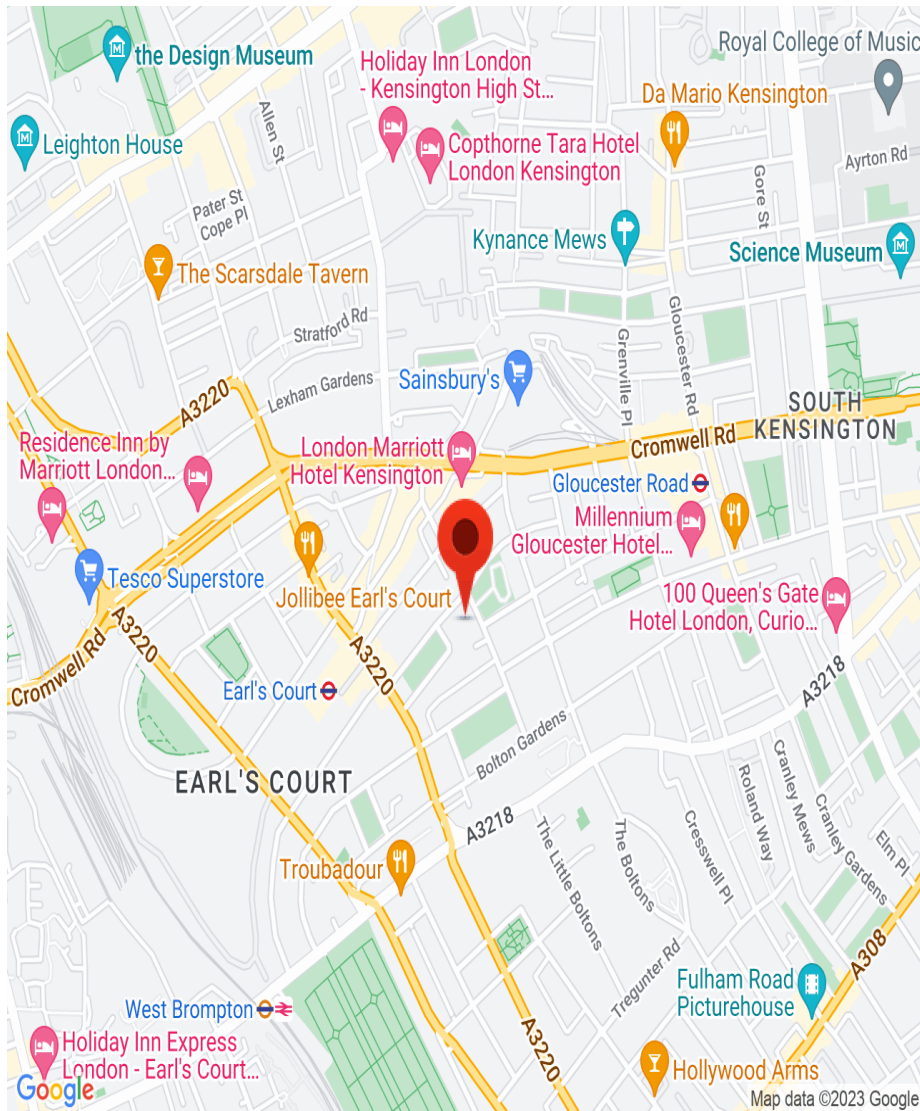
INTERLET

COURTFIELD GARDENS, EARLS COURT, LONDON, SW5
£460 PW



BILLS INCLUDED for £50 extra - A newly refurbish cosy and bright double studio flat on Courtfield Gardens in London's vibrant Earls Court, SW5. The apartment comprises a modern kitchen with oven, hob and fridge-freezer. The studio has plenty of storage in fitted cabinets and wardrobes, and further comprises a dining table, comfortable double bed and tiled en-suite bathroom with shower. The studio is situated on the corner of Courtfield Gardens, only a stone's throw from the diverse amenities of Earls Court and Gloucester Road. This also gives the property excellent transport links, with Earls Court and Gloucester Road stations (District, Circle, Picadilly Lines) providing good access to the tube network. Many central Bus routes also pass through the area, with nearby Cromwell Road offering onward connections to Kensington, Knightsbridge and beyond.[...]

l e t t i n g s @ i n t e r l e t . c o m
+ 4 4 (0) 2 0 7 7 9 5 6 5 2 5
w w w . i n t e r l e t . c o m



Important Notice

Interlet and their clients give notice that: 1) They are not authorised to make or give any representations or warranties in relation to the property, either here or else where. The particulars do not form part of any offer part of any offer or contract and must not be relied upon as statements or representations of fact. 2. Any areas, measurements, distances are approximate. The text, images and plans are for guidance only and are not necessarily comprehensive. It should not be assumed that the property has all necessary planning, building regulation or other contents and Interlet have not tested any services, equipment or facilities. Prospective tenants must satisfy themselves by inspection or otherwise. Please note that the local area may be affected by aircraft noise, you should make your own enquiries regarding any noise in the area before you make an offer.



iNTERLET
SALES & LETTINGS

Welcome home.