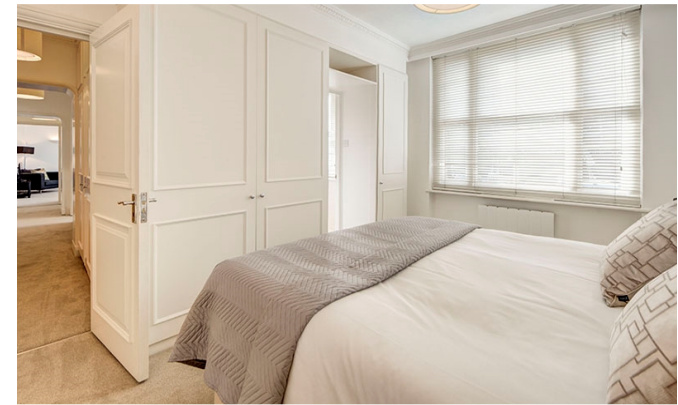




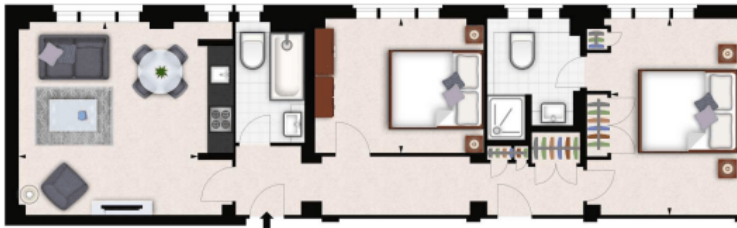
INTERLET

HILL STREET, MAYFAIR, LONDON, W1J
£1,200 PW



A stunning two-bedroom apartment set on the first floor of a beautiful red brick building in the heart of London's fashionable Mayfair, W1J. The apartment is set over 732 sq ft and comprises two large double bedrooms, two modern bathrooms, a spacious reception room, and a unique kitchenette with further benefits of storage space and access to a private gated communal garden. The property also benefits from a porter, building manager, 24-hour maintenance service, lift service, and CCTV. This beautiful purpose-built building is nestled conveniently between two of London's famous parks Hyde Park and Green Park. For transport links, Green Park (Jubilee, Piccadilly, and Victoria Lines) and Bond Street (Central and Jubilee Lines) Underground Stations are only a few minutes away. Numerous bus stops are also very close by, making it easy to commute through Central London. Holding deposit: £1,200[...]

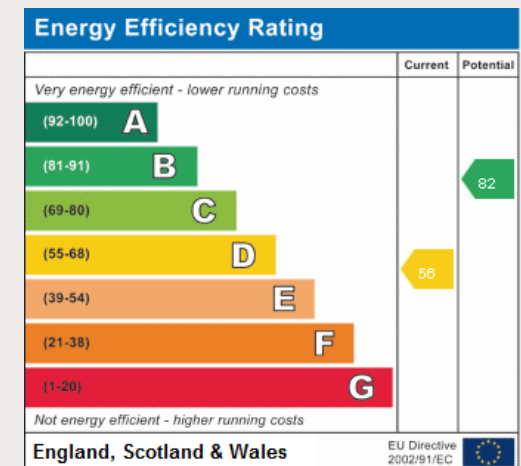
lettings@interlet.com
+44(0)20 7795 6525
www.interlet.com



Approx, Gross Internal Area*
739 ft² - 68.65 m²

Important Notice

Interlet and their clients give notice that: 1) They are not authorised to make or give any representations or warranties in relation to the property, either here or elsewhere. The particulars do not form part of any offer or contract and must not be relied upon as statements or representations of fact. 2) Any areas, measurements, and distances are approximate. The text, images, and plans are for guidance only and are not necessarily comprehensive. It should not be assumed that the property has all necessary planning, building regulation, or other contents. Interlet has not tested any services, equipment, or facilities. Prospective tenants must satisfy themselves by inspection or otherwise. Please note that the local area may be affected by aircraft noise, you should make your own inquiries regarding any noise in the area before you make an offer.



interlet

SALES & LETTINGS

Welcome home.