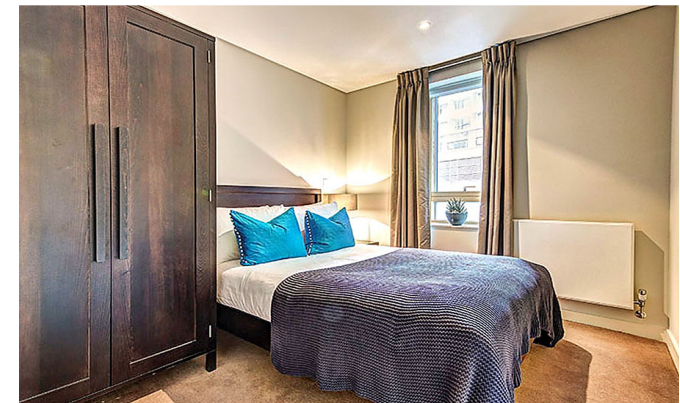




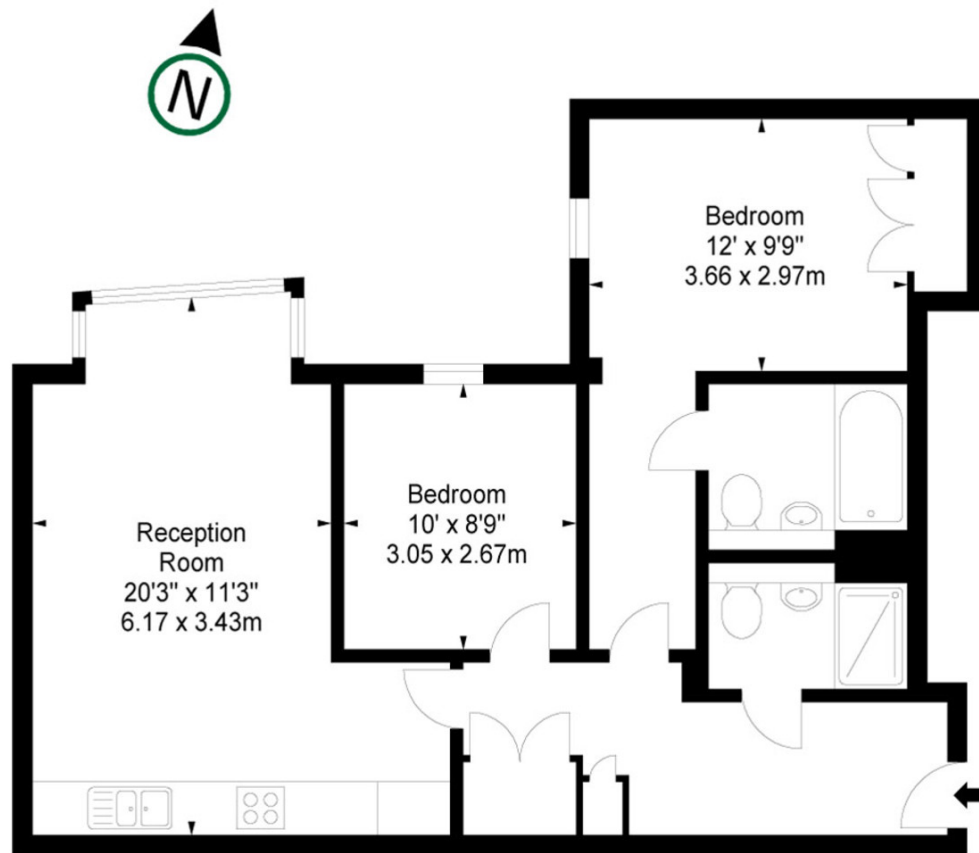
INTERLET

MERCHANT SQUARE, BAYSWATER, LONDON W2
£850 PW



Stunning interior designed two bedroom, two bathroom apartment, set within the heart of the Paddington Basin and close to the popular West End Quay. The property comes fully furnished and comprises a beautiful reception room with superb views, two bedrooms (one is en-suite), two bathrooms, modern fitted open plan kitchen with all integrated appliances and ample storage space. The apartment is situated on the second floor of this prestigious building which features 24 hour concierge, lift service and secure underground parking. Merchant Square forms part of the Paddington Basin regeneration and is located within close proximity of Hyde Park. For transport links is in easy access of both Edgware Road (District, Circle, Hammersmith and City and Bakerloo Lines) and Paddington Station (Bakerloo, Circle, District, Hammersmith and City lines) with its National and international connections.[...]

l e t t i n g s @ i n t e r l e t . c o m
+ 4 4 (0) 2 0 7 7 9 5 6 5 2 5
w w w . i n t e r l e t . c o m



Important Notice

Interlet and their clients give notice that: 1) They are not authorised to make or give any representations or warranties in relation to the property, either here or else where. The particulars do not form part of any offer part of any offer or contract and must not be relied upon as statements or representations of fact. 2. Any areas, measurements, distances are approximate. The text, images and plans are for guidance only and are not necessarily comprehensive. It should not be assumed that the property has all necessary planning, building regulation or other contents and Interlet have not tested any services, equipment or facilities. Prospective tenants must satisfy themselves by inspection or otherwise. Please note that the local area may be affected by aircraft noise, you should make your own enquiries regarding any noise in the area before you make an offer.

iNTERLET
SALES & LETTINGS

Welcome home.