



INTERLET

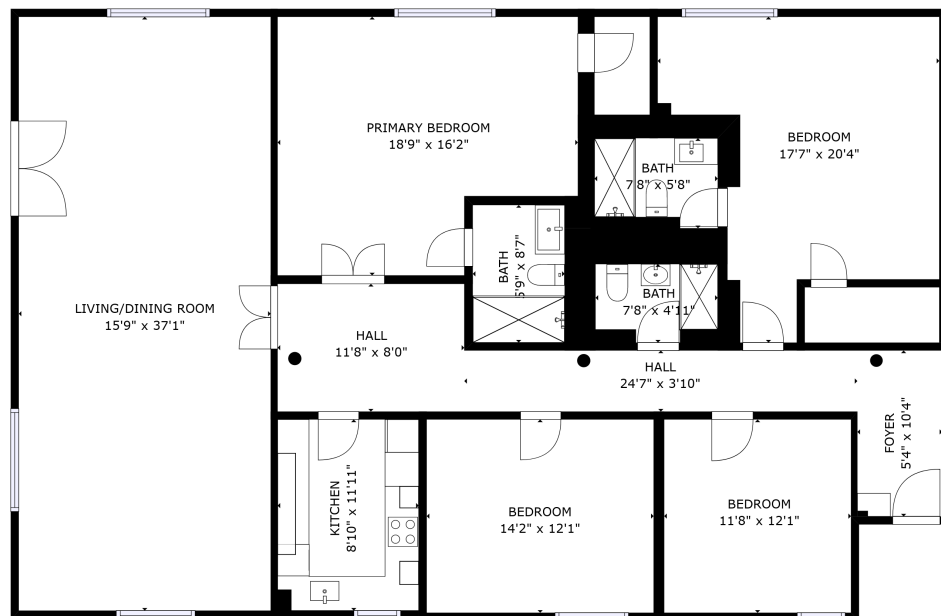
IVORY HOUSE, EAST SMITHFIELD
£14,175.17 PCM



Welcome to Ivory House, a stunning Grade II Listed warehouse nestled in the heart of St Katharine Docks. This meticulously restored apartment seamlessly blends historic charm with modern luxury, providing a unique and memorable experience for your stay in London. Retaining a host of original warehouse features, the apartment spans an impressive 2099 sq ft of expansive lateral space on the first floor. Beautiful barrel-vaulted ceilings, exposed brickwork, cast-iron columns, and beams add character to every corner. The unit sits elegantly above the dock, providing an incredible Dockside vista. The living spaces are bathed in natural light, with a picturesque triple-aspect reception room offering serene views over the East dock through impressive warehouse-style windows and a Juliet balcony. The apartment features two equally spacious and South-facing principal bedroom suites, each with dressing areas and en-suite bathrooms. In addition, two more bedrooms provide comfortable accommodation. With a total of 4 bedrooms and 4 bathrooms, the apartment is furnished with 2 king-sized beds, 1 super king bed and a double sofa bed, ensuring a restful night's sleep. The modern luxury kitchen is perfect for culinary enthusiasts, and a further family bathroom adds convenience. An inviting hallway with high barrel-vaulted ceilings and original tiled flooring leads to all living spaces, creating a s[...]



lettings@interlet.com
+44(0)20 7795 6525
www.interlet.com



FLOOR 1

GROSS INTERNAL AREA
FLOOR 1: 2107 sq. ft.
TOTAL: 2107 sq. ft.
SIZES AND DIMENSIONS ARE APPROXIMATE, ACTUAL MAY VARY.



Important Notice

Interlet and their clients give notice that: 1) They are not authorised to make or give any representations or warranties in relation to the property, either here or elsewhere. The particulars do not form part of any offer or contract and must not be relied upon as statements or representations of fact. 2) Any areas, measurements, and distances are approximate. The text, images, and plans are for guidance only and are not necessarily comprehensive. It should not be assumed that the property has all necessary planning, building regulation, or other contents. Interlet has not tested any services, equipment, or facilities. Prospective tenants must satisfy themselves by inspection or otherwise. Please note that the local area may be affected by aircraft noise, you should make your own inquiries regarding any noise in the area before you make an offer.



interlet

SALES & LETTINGS

Welcome home.