



INTERLET

HILL STREET, MAYFAIR, LONDON W1J
£775 PW



Well proportioned one double bedroom apartment in this beautiful red brick building, situated in the heart of London's fashionable Mayfair. The apartment is set over 565 sq ft. and comprises a large double bedroom, airy living area, modern bathroom and a modern fitted kitchen and benefits from ample storage space. Property also benefits from on-site building manager, lift service, key entry phone, 24-hour emergency helpline, digital TV and CCTV. Available Furnished or Unfurnished for Long or Short term let. For transport links Green Park (Jubilee, Piccadilly and Victoria Lines) and Bond Street (Central and Jubilee Lines) tube stations are only few minutes away. Beautiful Hyde Park and Green Park are only stone's throw away. This property is a MUST SEE! [...]



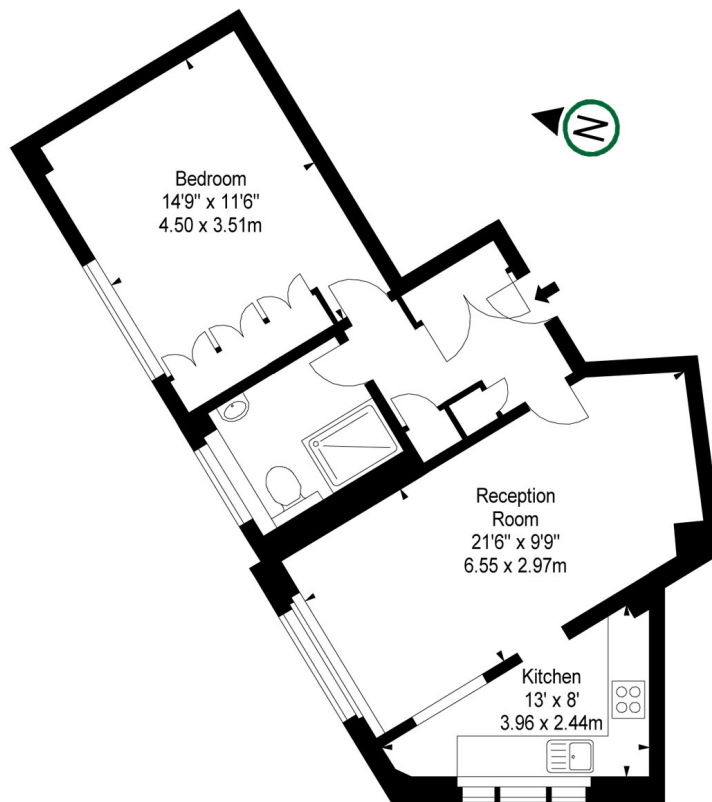
lettings@interlet.com
+44(0)20 7795 6525
www.interlet.com

39 HILL STREET W1

APPROX. GROSS INTERNAL AREA *
583 Ft² - 54.16 M²

Illustration For Identification Only, Not to Scale
All Calculations include Any/All Areas Under 1.5m Head Height.

* As Defined by RICS - Code of Measuring Practice



FOURTH FLOOR

Important Notice

Interlet and their clients give notice that: 1) They are not authorised to make or give any representations or warranties in relation to the property, either here or elsewhere. The particulars do not form part of any offer or contract and must not be relied upon as statements or representations of fact. 2) Any areas, measurements, and distances are approximate. The text, images, and plans are for guidance only and are not necessarily comprehensive. It should not be assumed that the property has all necessary planning, building regulation, or other contents. Interlet has not tested any services, equipment, or facilities. Prospective tenants must satisfy themselves by inspection or otherwise. Please note that the local area may be affected by aircraft noise, you should make your own inquiries regarding any noise in the area before you make an offer.

interlet

SALES & LETTINGS

Welcome home.