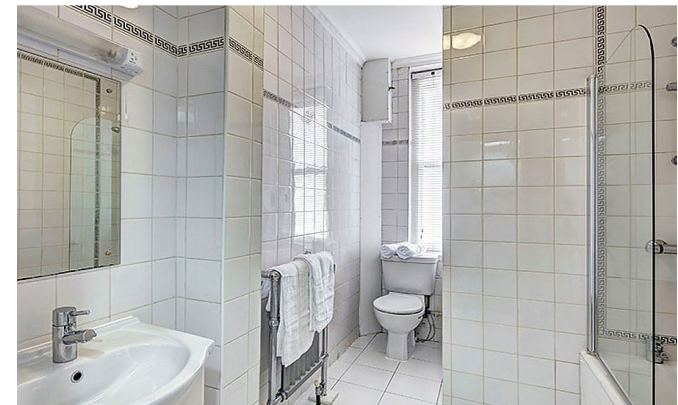




INTERLET

WAVERTON STREET, MAYFAIR, LONDON W1J
£700 PW



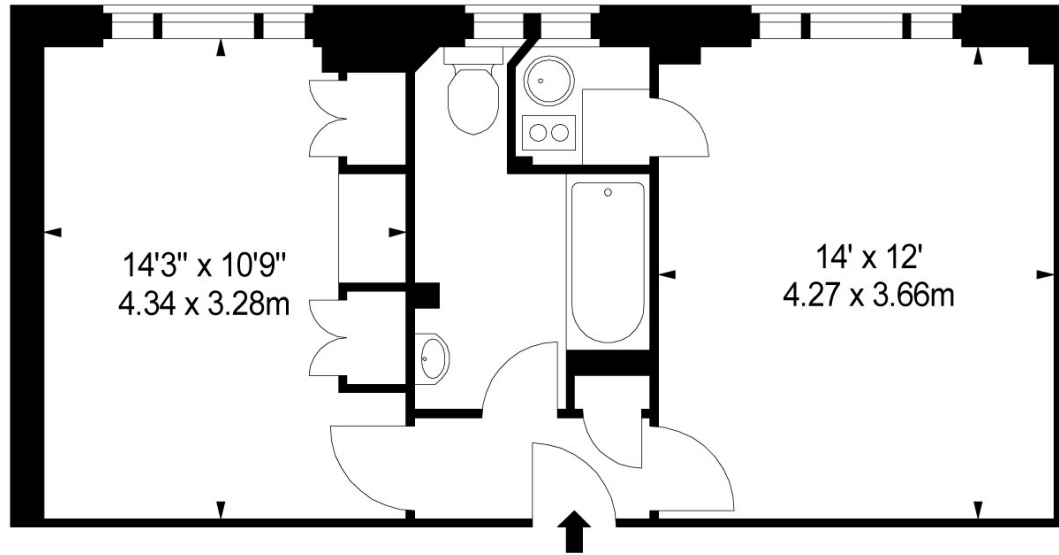
A fully furnished one double bedroom apartment with fantastic views set within the heart of London's fashionable Mayfair, W1J. This top floor flat is set over 423 sq ft. and comprises a newly refurbished large living room, modern double bedroom, modern bathroom and a unique kitchenette. Tenants also benefit from a dedicated building manager, porter, lift service and CCTV. Available for SHORT OR LONG TERM LET. The property benefits from excellent transportation links, as Green Park (Jubilee, Piccadilly and Victoria lines) and Bond Street (Central and Jubilee lines) tube stations are only few minutes away. Stops for many key bus routes are also close by, making it easy to commute through Central London.[...]

l e t t i n g s @ i n t e r l e t . c o m
+ 4 4 (0) 2 0 7 7 9 5 6 5 2 5
w w w . i n t e r l e t . c o m

39 HILL STREET, W1

APPROX. GROSS INTERNAL AREA *
423 Ft² - 39.30 M²

ILLUSTRATION FOR IDENTIFICATION PURPOSES ONLY. NOT TO SCALE
* As Defined by RICS - Code of Measuring Practice



EIGHTH FLOOR

Important Notice

Interlet and their clients give notice that: 1) They are not authorised to make or give any representations or warranties in relation to the property, either here or else where. The particulars do not form part of any offer part of any offer or contract and must not be relied upon as statements or representations of fact. 2. Any areas, measurements, distances are approximate. The text, images and plans are for guidance only and are not necessarily comprehensive. It should not be assumed that the property has all necessary planning, building regulation or other contents and Interlet have not tested any services, equipment or facilities. Prospective tenants must satisfy themselves by inspection or otherwise. Please note that the local area may be affected by aircraft noise, you should make your own enquiries regarding any noise in the area before you make an offer.

iNTERLET
SALES & LETTINGS

Welcome home.