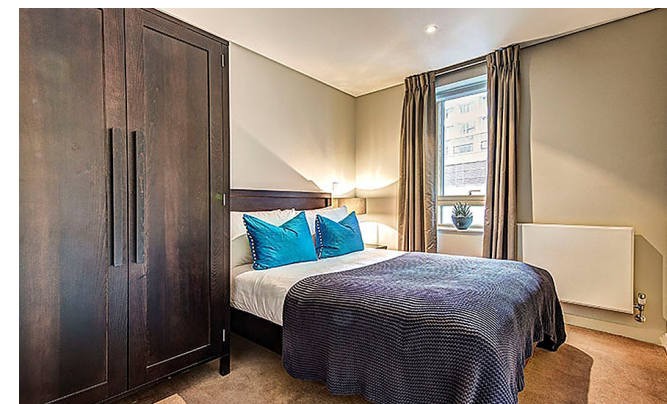




INTERLET

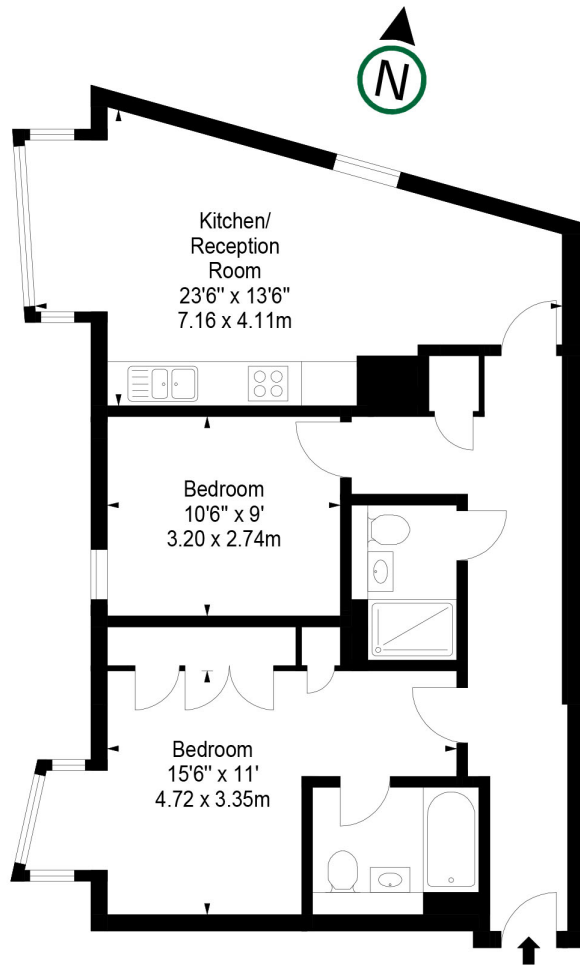
MERCHANT SQUARE, HARBET ROAD, PADDINGTON, LONDON W2

£825 PW



Stunning, interior designed, 2 double bedroom, 2 bathroom apartment set within the heart of the Paddington Basin and close to the popular West End Quay. The apartment is situated on the eleventh floor of this prestigious building which features concierge, lift service, and secure underground parking. The stunning apartment comprises spacious living and entertaining space with a beautiful reception room with superb views, a splendid modern fitted open plan kitchen, two bedrooms (master with en-suite), family bathroom and ample storage space. Available Furnished or Unfurnished. Adjacent to the Grand Union Canal, Merchant Square is a new development and it is conveniently located moments from the transport and shopping amenities of Paddington (Bakerloo, Hammersmith & City, Circle, District lines and Heathrow Express) and Edgware Road (Circle, District and Bakerloo lines).[...]

l e t t i n g s @ i n t e r l e t . c o m
+ 4 4 (0) 2 0 7 7 9 5 6 5 2 5
w w w . i n t e r l e t . c o m



Important Notice

Interlet and their clients give notice that: 1) They are not authorised to make or give any representations or warranties in relation to the property, either here or else where. The particulars do not form part of any offer part of any offer or contract and must not be relied upon as statements or representations of fact. 2. Any areas, measurements, distances are approximate. The text, images and plans are for guidance only and are not necessarily comprehensive. It should not be assumed that the property has all necessary planning, building regulation or other contents and Interlet have not tested any services, equipment or facilities. Prospective tenants must satisfy themselves by inspection or otherwise. Please note that the local area may be affected by aircraft noise, you should make your own enquiries regarding any noise in the area before you make an offer.

iNTERLET
SALES & LETTINGS

Welcome home.