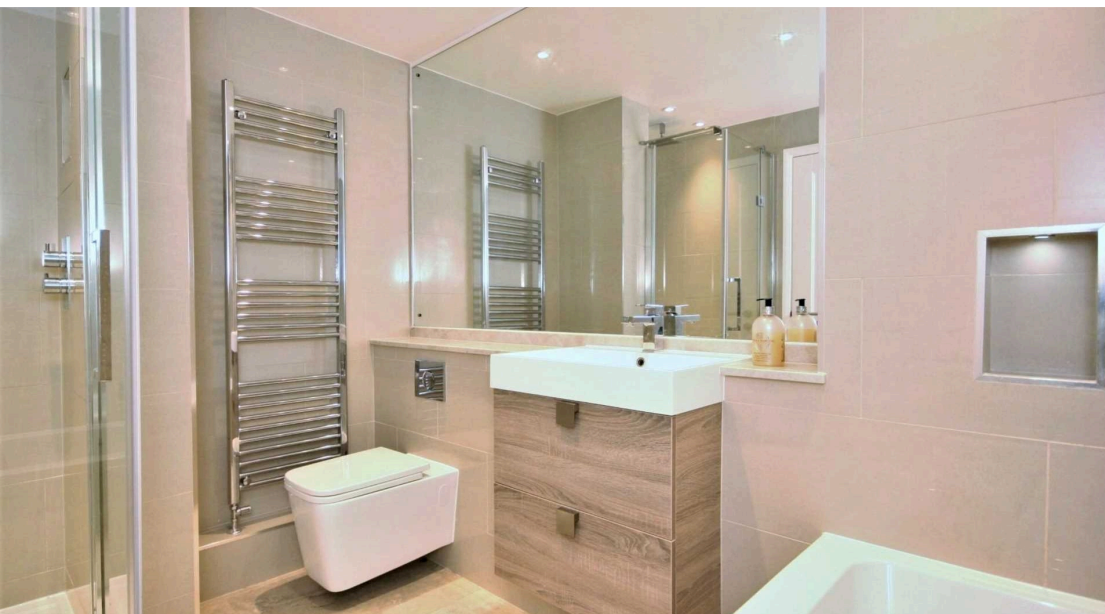




 1  
Bedroom

 1  
Bathroom



Beautiful upper floor flat

Situated in one of Beckenham's most sought after roads

Close to Beckenham Junction station

Beckenham town shopping centre

Cinema, Restaurants, local Churches

Sports facilities and Swimming baths

Available almost immediately

A stunningly beautiful upper floor flat, situated in one of Beckenham`s most sought after roads and close to Beckenham Junction Station, Tram stop, high street, and exceptional schools. Briefly comprising: entrance hall; living room; large balcony; fully integrated kitchen; double bedroom; luxury bathroom. This property offers a new and unique experience to living in a modern apartment with special features including: specialist equipment for sound surround with integrated speakers; wiring setup for wall mounted Smart TV`s in the lounge and bedroom; laminated wood flooring; granite work tops to the kitchen with integrated appliances:- unique gas hob; fridge-freezer; washing machine; dishwasher; fitted wardrobe; gas central heating with Hive remote timer and heating control, and double-glazed windows. Viewing is highly recommended at your earliest opportunity.

- \* One double bedroom apartment in Beckenham
- \* High quality kitchen with integrated appliances
- \* Large lounge with dining area and direct balcony access
- \* Beautiful laminated wood flooring and travertine bathroom flooring

**Entrance Hall** *(0m x 0m)*

**Lounge** *(5.1m x 5.3m)*

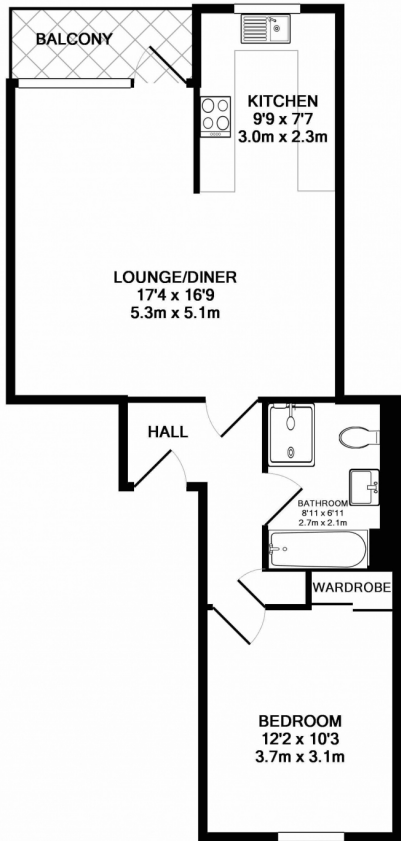
**Balcony** *(0m x 0m)*

**Kitchen** *(2.3m x 3m)*

**Bedroom** *(3.1m x 3.7m)*

**Bathroom** *(2.1m x 2.7m)*





TOTAL APPROX. FLOOR AREA 567 SQ.FT. (52.7 SQ.M.)  
Measurements are approximate. Not to scale. Illustrative purposes only  
Made with Metropix ©2019

