



 **2**
Bedrooms

 **1**
Bathroom



A well presented spacious two bedroom apartment for sale immediately. Early viewings highly recommended.

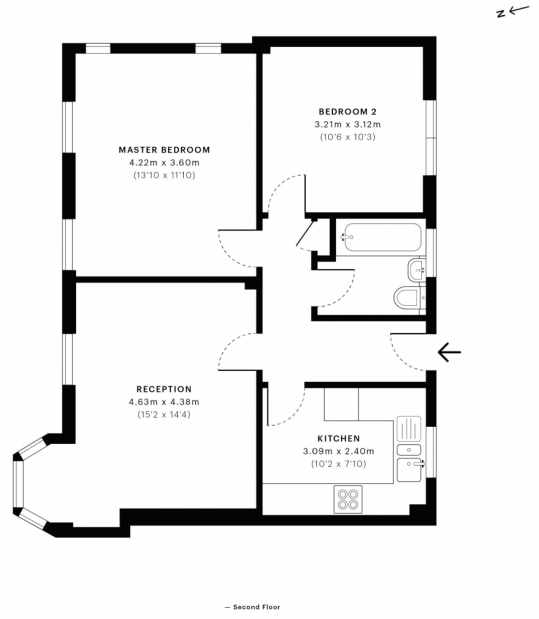
A chance to purchase this recently refurbished two double bedroom apartment situated on the second floor of this well-maintained block with a lift conveniently located for Hanger Lane station and a short journey to Pitshanger Village and Ealing Broadway.

Accommodation comprises a spacious separate reception room with lots of natural light , two genuinely large double bedrooms with lots of natural light, lovely super modern kitchen and a tiled family bathroom suite.

Further benefits include gas central heating and double glazing and is offered for sale in excellent condition throughout.

Call Knight Young today to arrange viewing . Highly recommended.

Gordon House, W5
 KNIGHT YOUNG PROPERTY CONSULTANTS
 CAPTURED DATE: 01/11/2019
 LATEST PLAN POINTS: 14,585,009
 GROSS INTERNAL AREA: 59.6 Sqm / 641.5 Sqft



GROSS INTERNAL AREA: 59.6 Sqm / 641.5 Sqft
 NET AREA (INTERNAL): 57.4 Sqm / 618.2 Sqft
 EXTERNAL STRUCTURAL FEATURES: 0.0 Sqm / 0.0 Sqft
 RESTRICTED HEAD HEIGHT: 0.0 Sqm / 0.0 Sqft

Spec floor plans are produced in accordance with the Royal Institution of Chartered Surveyors' Property Measurement Standards. Plans and gardens are illustrative only and are excluded from all area calculations. Due to rounding, numbers may not add up precisely. All measurements shown for the individual room lengths and widths are the maximum points of measurements captured in the scan.

IPMS 3B RESIDENTIAL: 61.0 Sqm / 655.6 Sqft
 IPMS 3C RESIDENTIAL: 58.8 Sqm / 633.3 Sqft
 SPHC ID: 5dbaed372e010a26943056

