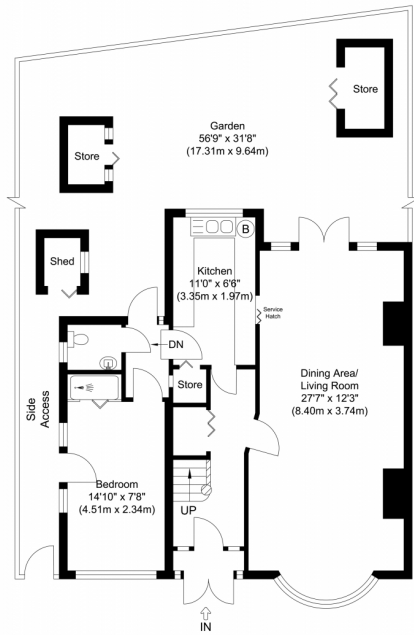




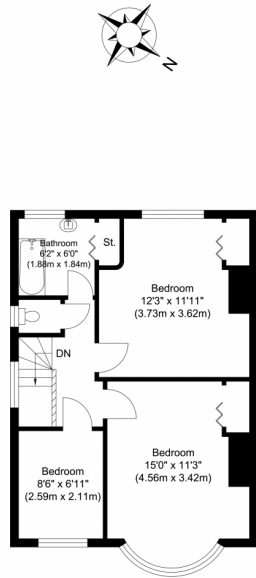
 **3**
Bedrooms

 **1**
Bathrooms





Ground Floor
Approximate Floor Area
650.46 sq. ft.
(60.43 sq. m)



First Floor
Approximate Floor Area
471.88 sq. ft.
(43.84 sq. m)

Total Gross Internal Area
1122.35 sq. ft.
(104.27 sq. m)

Somerset Way, Hounslow, TW5

Illustration for identification purposes only, measurements are approximate, not to scale.



For more info

