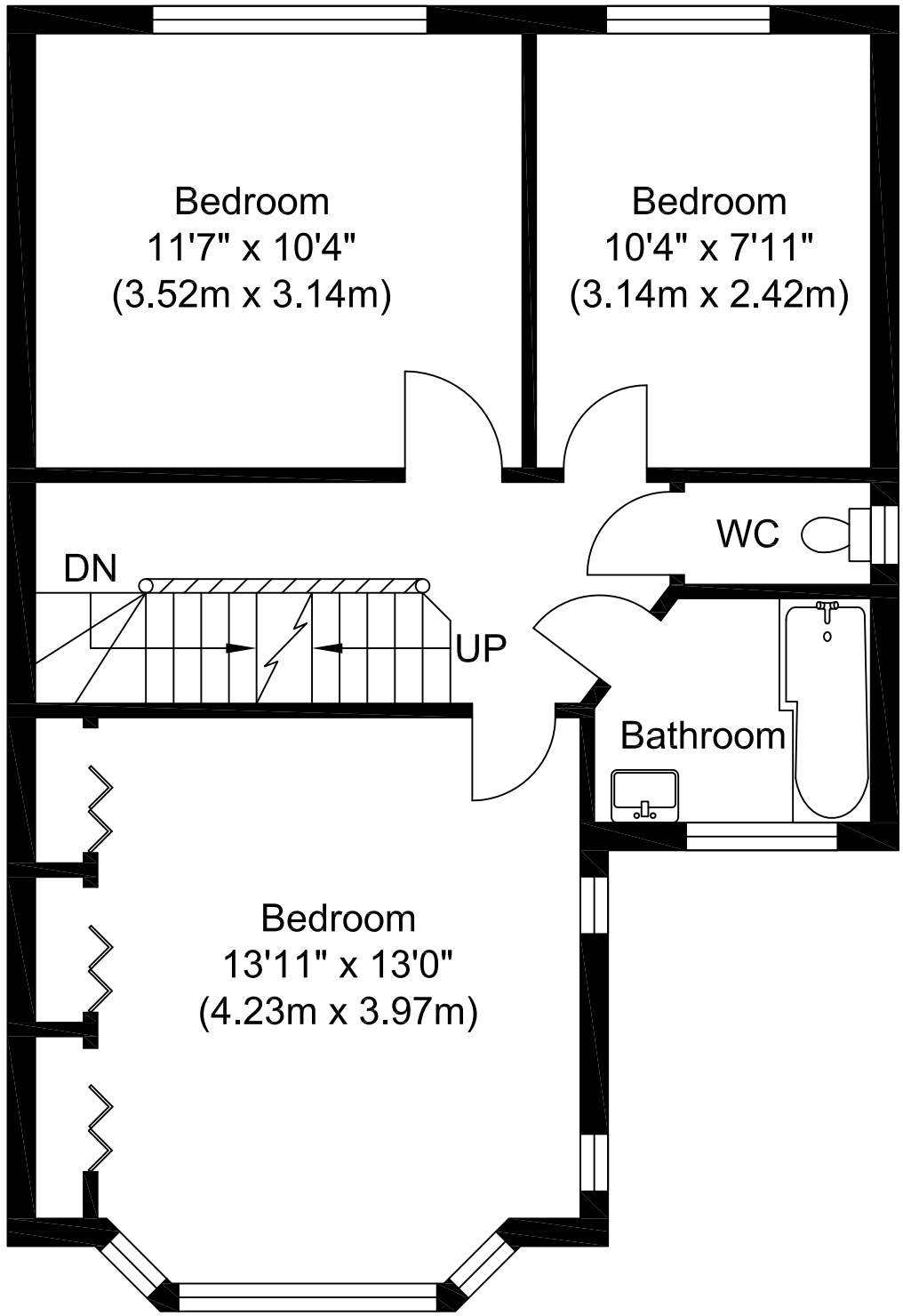
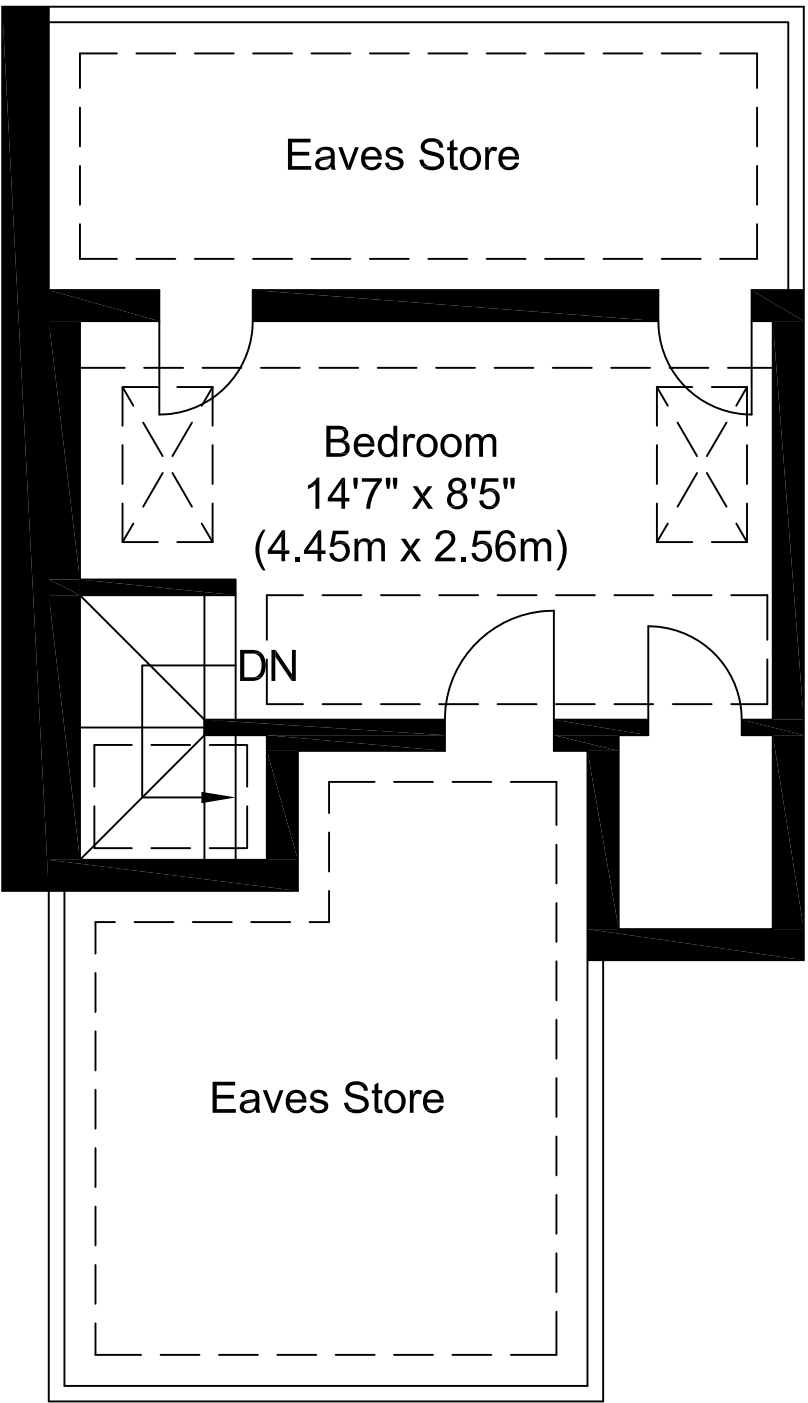


Ground Floor
Approximate Floor Area
806.43 sq. ft.
(74.92 sq. m)



First Floor
Approximate Floor Area
504.18 sq. ft.
(46.84 sq. m)



Top Floor
Approximate Floor Area
148.54 sq. ft.
(13.80 sq. m)

Total Gross Internal Area (Including Garage & Outbuilding)
2073.56 sq. ft.
(192.64 sq. m)

Total Gross Internal Area (Excluding Garage & Outbuilding)
1459.15 sq. ft.
(135.56 sq. m)

Balfour Road, Hounslow, TW3

Illustration for identification purposes only, measurements are approximate, not to scale.