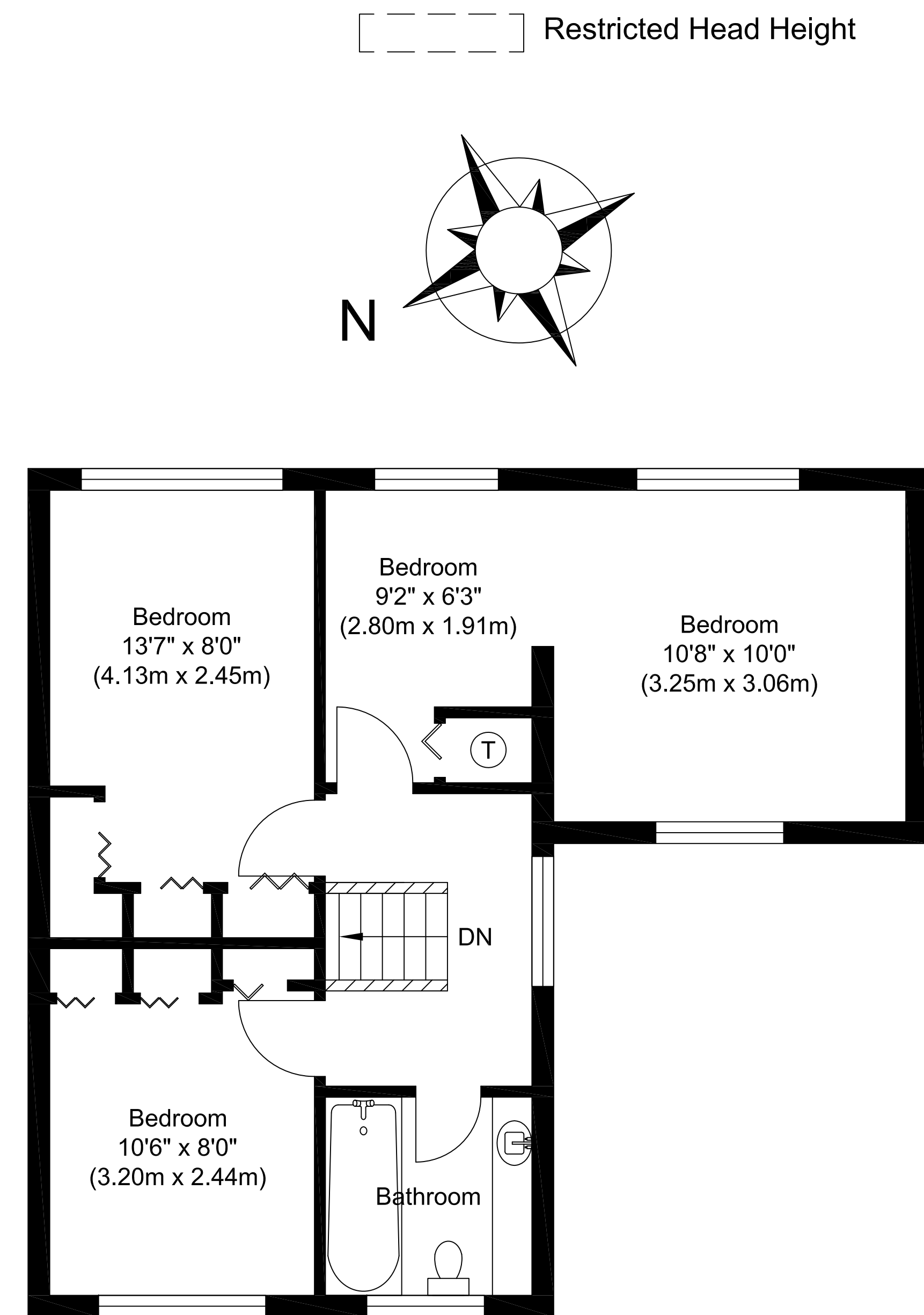


Ground Floor
 Approximate Floor Area
 603.42 sq. ft.
 (56.06 sq. m)



First Floor
 Approximate Floor Area
 469.52 sq. ft.
 (43.62 sq. m)

Total Gross Internal Area
 1072.94 sq. ft.
 (99.68 sq. m)

Whytecroft, Hounslow, TW5

Illustration for identification purposes only, measurements are approximate, not to scale.