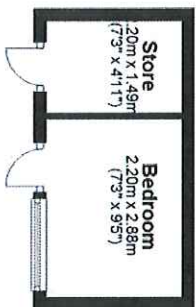
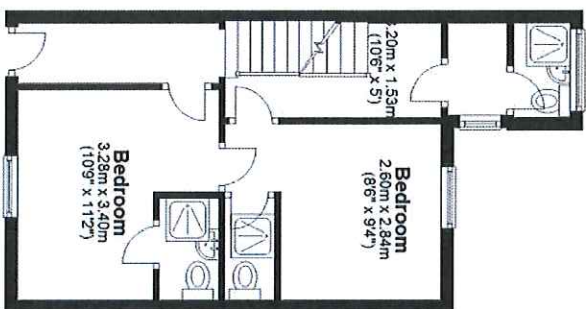


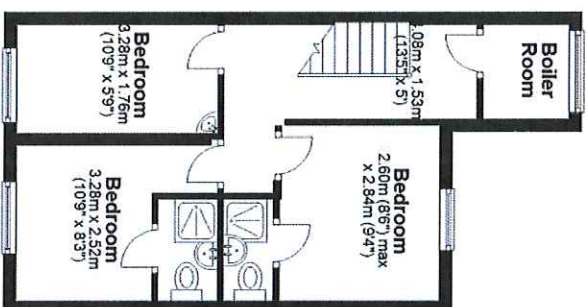
Approx. 64.9 sq. metres (698.3 sq. feet)



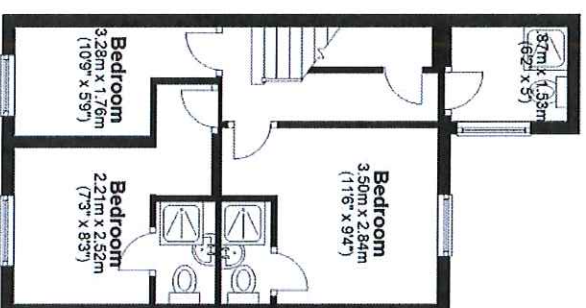
Ground Floor
Approx. 33.0 sq. metres (355.3 sq. feet)



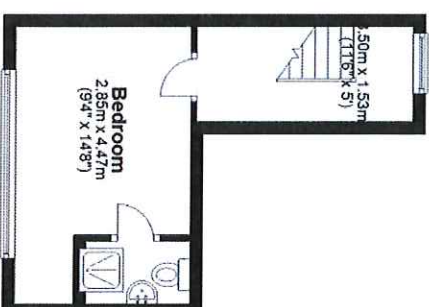
First Floor
Approx. 33.8 sq. metres (361.9 sq. feet)



Second Floor
Approx. 33.4 sq. metres (359.7 sq. feet)



Third Floor
Approx. 18.3 sq. metres (197.5 sq. feet)



Whilst every attempt has been made to ensure the accuracy of the floor plan contained here, no responsibility is taken for incorrect measurements of doors, windows, appliances and rooms or any error, omission or misstatement. Exterior and interior walls are drawn based on either interior measurements or measurements including wall thicknesses or a mixture of both. All dimensions are given in metres and feet. No responsibility is taken for any error, omission or misstatement. Any figure given is for initial guidance only and should not be relied on as a basis of valuation. These plans are for marketing purposes only and should be used as such by any prospective purchaser or other interested party. No guarantee is given on the total square footage of the property if quoted on this plan. If full measured areas and CAD plans are required for this building please contact us: www.zaventile.com