



Elmbank Avenue, EN5

3 bedroom semi-detached house for sale - Offers in excess of £600,000

Elmbank Avenue, EN5

Offers in excess of £600,000 - 3 bedroom semi-detached house for sale

<https://mantlestates.com/>

Description:

Mantlestates are pleased to present this 3 BEDROOM SEMI DETACHED house. The property boasts a DETACHED GARAGE and OFF-STREET PARKING for 3 cars. The property is set in a QUIET LOCATION, Near to BARNET HOSPITAL & POTENTIAL TO EXTEND S.T.P.P. Down stairs cloakroom, double glazed & gas central heating.

Entrance Hall:

Double glazed window to front, single radiator, laminate, under stairs storage cupboard.

Open plan kitchen dining area 9'11 x 18'09

Kitchen Area:

Laminate, plumbed washing machine, tiled walls, oven, sink with mixer tap and drainer, double glazed window to rear, single radiator, electric oven.

Dining Area:

Laminate, double glazed door to rear, single radiator, coving to ceiling. Door to downstairs W/C.

Downstairs W/C:

Laminate, boiler, low level flush water closet, part tiled walls.

Lounge: 13'00 x 12'04

Laminate, double glazed window to front, electric fireplace, single radiator, vent, coving to ceiling.

Mantlestates

2A Church Hill Road

East Barnet

EN4 8TB

info@mantlestates.com

020 827 51555



Elmbank Avenue, EN5

Offers in excess of £600,000 - 3 bedroom semi-detached house for sale

<https://mantlestates.com/>

Landing:

Loft hatch to part-boarded loft with insulation, carpet, storage cupboard, double glazed window to side.

Bathroom:

Low level flush water closet, sink with mixer tap, panel bath with mixer tap and electric shower, part tiled walls, heated towel rail, electric heater on wall.

Rear Bedroom: 10'06 x 11'07

Carpet, storage cupboard, double glazed window to rear, single radiator.

Master Bedroom: 11'07 x 8'07

Fitted wardrobes, carpet, double glazed window to front, single radiator.

Bedroom: 6'07 x 8'02

Fitted wardrobe, carpet, double glazed window to front, single radiator.

Garden:

Patio area, raised lawn, access to garage, pebbled area, outside tap.

Exterior:

Single garage, side gate, driveway for up to 3 cars.

Mantlestates

2A Church Hill Road

East Barnet

EN4 8TB

info@mantlestates.com

020 827 51555



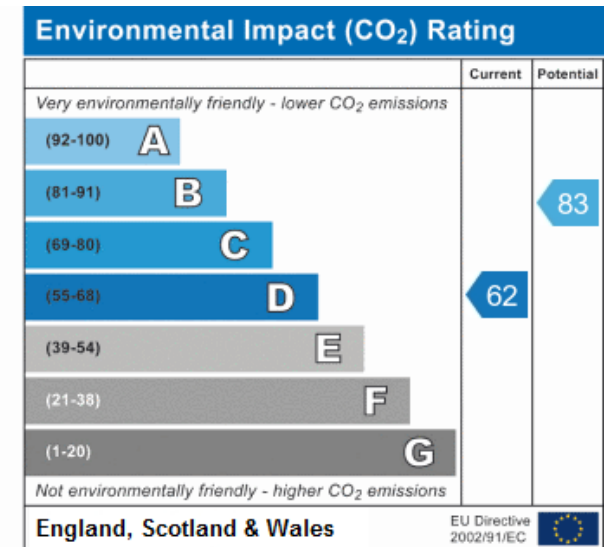
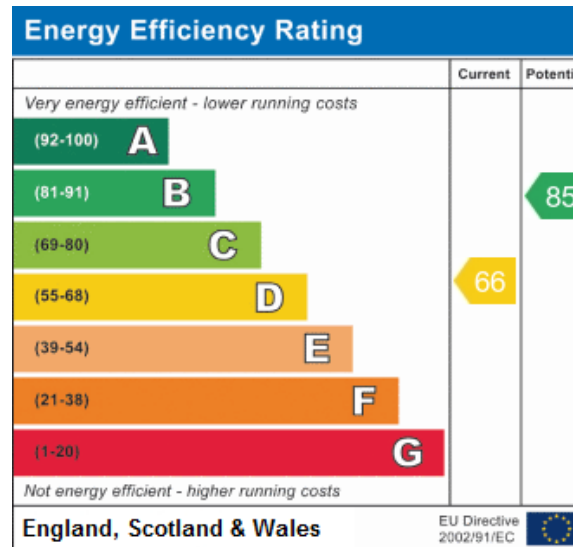
Elmbank Avenue, EN5

Offers in excess of £600,000 - 3 bedroom semi-detached house for sale

<https://mantlestates.com/>

Features:

3 BEDROOM SEMI-DETACHED HOUSE
GARAGE AND OFF STREET PARKING FOR 3 CARS
OFFERED CHAIN FREE
CLOSE TO BARNET HOSPITAL
CATCHMENT TO POPULAR SCHOOLS
POTENTIAL TO EXTEND S.T.P.P
GAS CENTRAL HEATING AND ANGLIAN WINDOWS
DOWNSTAIRS W/C
QUIET LOCATION



Mantlestates

2A Church Hill Road

East Barnet

EN4 8TB

info@mantlestates.com

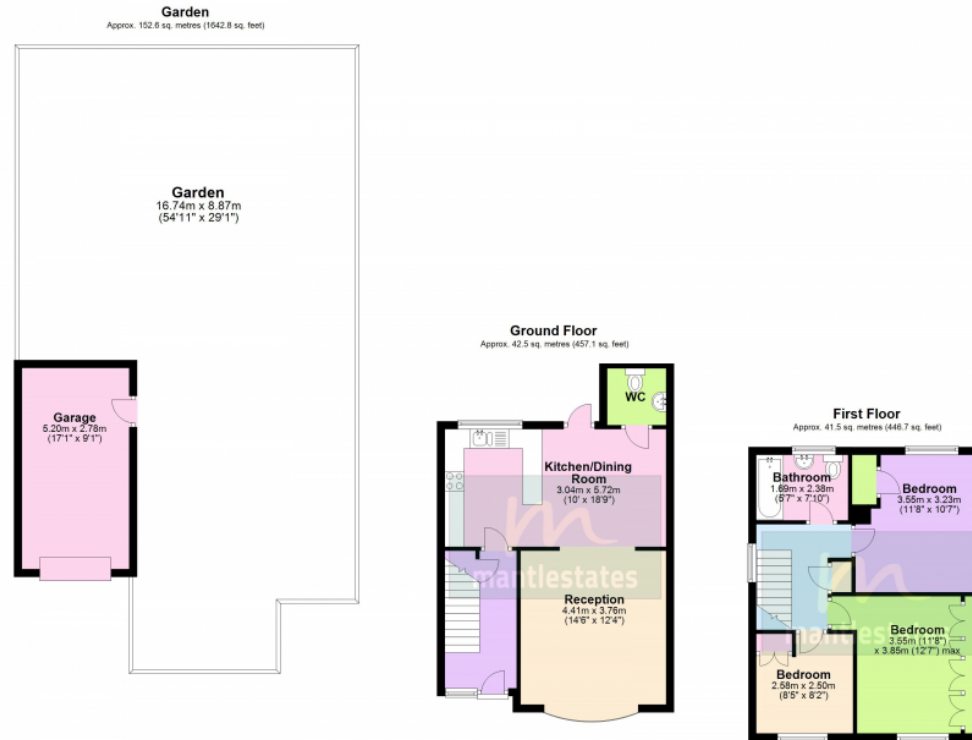
020 827 51555



Elmbank Avenue, EN5

Offers in excess of £600,000 - 3 bedroom semi-detached house for sale

<https://mantlestates.com/>



Total area: approx. 236.6 sq. metres (2546.6 sq. feet)

Whilst every attempt has been made to ensure the accuracy of the floor plan contained here, the measurements of doors, windows, rooms and any other items are approximate and no responsibility is taken for error, omission or representation. The floor plan is for illustrative purposes only and should be used as such by any prospective Purchaser.

Mantlestates

2A Church Hill Road

East Barnet

EN4 8TB

info@mantlestates.com

020 827 51555



Elmbank Avenue, EN5

Offers in excess of £600,000 - 3 bedroom semi-detached house for sale

<https://mantlestates.com/>



Mantlestates

2A Church Hill Road

East Barnet

EN4 8TB

info@mantlestates.com

020 827 51555



Elmbank Avenue, EN5

Offers in excess of £600,000 - 3 bedroom semi-detached house for sale

<https://mantlestates.com/>



Category :Property for sale

Admin Fees : 0

Use this agent code below

MANTLE

(or)



Mantlestates

2A Church Hill Road

East Barnet

EN4 8TB

info@mantlestates.com

020 827 51555

